

SABBATH SCHEDULE

7:00 am - Early Morning Prayer

7:30-8:15 am - Cafe Breakfast

9:00 am - Pathfinder Parade:
paved walk way

9:30 am - Sabbath School
Pathfinder Feature
Education Feature
Lesson: Amir Gulzar

10:40 am - Worship Service:
Elden Ramirez

12:00-12:45 pm - Cafe Lunch

3:00 pm - Ordination: Pastor
Carlton Mouzon - Pavilion

3:00 - 4:00 pm - Nature Hunt:
Little Red Schoolhouse

4:00 pm - Music Concert:
Annette Campbell - Pavilion

5:15-6:00 pm - Cafe Dinner

5:30 pm - Strawberry Shortcake
Feed: In front of AU Cabin

7:00 pm - Mini Concert:
Jodie Maloney

7:30 pm - Evening Meeting:
Elden Ramirez

After Sabbath Evening Mtg.
- Grand Opening of New
Camp Store
- Hallelujah Hustle
Registration

Shuttle Schedule

Shuttles run between the bath houses,
Hickory Lodge and Pioneer pavilion.

Pick-Up Times: Drop-Off Times:

9:00 - 9:30 am 12:00 - 12:30 pm

2:00 - 2:30 pm 5:00 - 5:30 pm

6:30 - 7:00 pm 8:45 - 9:15 pm

Fireside Lodge Cafeteria

SABBATH MENU

BREAKFAST

Sweet Rolls • Veggie Sausage •
Hard Boiled Eggs • Tofu

LUNCH

Haystacks

SUPPER

Popcorn • Fruit Salad • Hot
Dogs

*Breakfasts include hot & cold cereal,
milks, bread, yogurt and fruit.

*Lunch/Suppers include a salad bar.

*All meals are Vegetarian. Vegan and
Gluten Sensitive served upon request.

*Menu items subject to change.

ORDINATION SERVICE

Sabbath at 3:00 pm in Pioneer Pavilion



Pastor Carlton Mouzon with his wife,
Brenda.

Weather Forecast

FOR SABBATH

Daytime

Mostly Cloudy

79°

HIGH

Nighttime

Scat. T-storms

64°

LOW

Subject to change without notice

The *Camp Lamp* is distributed around
camp before 5:00 am daily in boxes
marked "Camp Lamp."

ANNOUNCEMENTS

Golf Carts & Service Animals

Please check in at the
Administration Office to register.

Caregivers of adults with
special needs: ID wristbands
are available upon request at
the Administration Office. Help
Camp Security find you in the
event the person in your care
becomes lost.

Camp Site Parking

- Park vehicle facing the road.

- Only one vehicle per
campsite. Thank you for parking
extra vehicles in designated
parking areas.

Meal Tickets

Remember to purchase
your meal tickets in the
Administration Office before
Sabbath.

Nature Center located in White
Pine Lodge. Open daily 2:00 -
4:30 pm.

Need to Locate Friends?

Check the directory in the
center grove in front of the
Administration Office.

PARENTS of Beginner and
Kindergarten children: Please
get ID wristbands from your
division leaders to aid in the
event your child becomes lost.

NURSES NEEDED during
camp meeting week. If
interested, please contact Todd
Roat 920-350-9248.

Reservation Hours:

Friday 9am-8pm

Sabbath: 9-9:30pm

Sunday: 9am-6pm

(Will publish daily hours in
future issues)

CAMP LAMP



Friday/Sabbath, June 14-15, 2024

20th Anniversary of Fireside Lodge!



Fireside Lodge as it was being built

The Wisconsin Conference
has proudly commemorated
numerous milestones in its 150-
year history. Throughout the
years, the church in Wisconsin
has witnessed remarkable
divine interventions on multiple
occasions.

This year, we are honored to
celebrate the 20th anniversary
of Fireside Lodge, also known
as the cafeteria. Building
the new cafeteria marked a
significant milestone in the
ongoing development of Camp
Wakonda. This beautiful four-
season building has served as a
venue for training events, camp
meetings, youth camps, church
programs, and various retreats.
Its impact has indeed been a
blessing for many.

Elder Don Corkum, who held
the position of president of
the Wisconsin Conference at
the time of the grand opening,
provided the following remarks
in connection with the Fireside
Lodge:

“Adventists in Wisconsin love
camp meeting and youth
camps. The facilities at the
camp ground, of what was
originally known as Camp Go
Seek, needed upgrading. The
cafeteria was a priority. So, a
decision was made to replace
the cafeteria.

It was a memorable day when
a piece of equipment from
Miller Construction began to
take down the old cafeteria,
revealing dry rot in the support

structure. We knew we had
made the right decision.

A lot of discussion, planning,
and strategizing went into the
development of the new facility.
Stan Bell from Michigan was
engaged to design the building.
It was to serve as a cafeteria,
conference center, as well as
headquarters for the youth
camps. The list would be long
to recognize all the contributors
who would make this new center
a reality. Jim Johnson was the
camp ranger, Mike Edge the
youth director, and Floyd Brock
employed by the conference for
special projects did much from
the church perspective.

Camp Meeting 2004 was the
official opening, during the 25th
Anniversary of the campground.
After the ribbon cutting,
everyone was invited to a free
meal—a great way to begin!

Fireside Lodge has been a
blessing for the last 20 years,
and we praise God for His
guidance in making it a reality.”

As we celebrate 20 years
of ministry in the Fireside
Lodge, we extend our heartfelt
appreciation to the members
and supporters of the Wisconsin
Conference for their consistent
commitment to the continual
miracle happening at Camp
Wakonda.

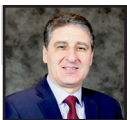
Continued inside...

1st
Weekend

Cover Story
CONTINUED...

The camp has recently undertaken significant improvements, including the construction of four new buildings for the youth divisions, remodeling and relocation of the camp store, substantial progress on a medical facility, the addition of four new family bathrooms, ongoing renovation of Cedar Lodge, and the installation of a laundry room and new Nature Center. These endeavors have been coordinated by Elgin and Becky Ziesmer as well as other dedicated workers and supporters, who have shown a steadfast interest in preserving our camp for future generations.

Camp Wakonda is a special place for worship, fellowship, and collaboration with God's ministry. The conference leadership is deeply grateful to all who have generously contributed their resources and time to further the mission of our camp. We eagerly look forward to the countless miracles that we believe await us.



Titus Naftanaila
President

ANNOUNCEMENTS

Earn Your Pin Trading Honor
Sabbath afternoon 2:00-4:00pm in the Pathfinder Cabin. Bring Pins to trade!

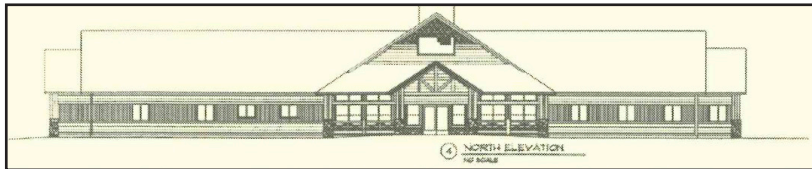
Strawberry Shortcake Feed
sponsored by Andrews University Alumni. Sabbath evening at 5:30 pm on the walkway in front of the AU Cabin.

Grand Opening: Camp Store
Saturday night following the evening program - Free Snow Cones!

Lost & Found located in the Administration Office.



Fireside Lodge Today: Celebrating 20 years of ministry!



Sketch of Fireside Lodge in 2003

Radio Station for Camp
Tune in to 87.9 FM to hear broadcasts of programming in Pioneer Pavilion during camp meeting.

Hallelujah Hustle 5K Run/Walk
7:30 am, Sunday at the ball field. Registration in front of Book Store: Friday 3-6 pm and Saturday night after the evening meeting.

Adventist Community Services
Meet and Greet: Sunday @ 2:00pm in Cedar Lodge. Come share what your church has been doing this year! Anyone interested in community service is welcome to attend!

New Beginners Sabbath School Curriculum Demo
Sunday @ 9:30 am in Red Pine Lodge basement. Sabbath School teachers and those interested in the new Beginners curriculum are welcome!

Kindergarten Kids!



Be on the look out for painted rocks, like these, hidden around the camp.

If you find one, bring it to the Kindergarten Division leader to pick a prize! One per family please.

SABBATH CONCERT



Annette Campbell grew up in a music-loving family in Kansas City, MO. A lifelong Seventh-day Adventist, she began singing in church on Sabbath at the age of seven.

After marrying her husband, John, they moved to Columbus, WI where they became deeply invested in Wisconsin Academy and started a nearly 40 year tradition of attending camp meeting.

Annette has been blessed with many opportunities to share her voice. She was Music Coordinator for *Adventures in Prophecy* and has worked directly with 3ABN, recording several music videos, and producing two CD's. Annette has also performed countless concerts and has been able to sing alongside many well-known 3ABN artists.

Annette and John currently live in Kentucky, near their daughter, but travel back to WI as often as possible to visit their son and keep in touch with friends here.

Annette is passionate about worship, using her gift of singing to glorify the Lord, and bring those around her into deeper fellowship with God. She is always humming a joyful tune, or learning and sharing her newest musical find with her family, friends, and church community.

CAMP PITCH PICTURES



Building the backdrop in the Primary Division



Kim Haas, ready to answer your questions in the Administration Building



Pastors Jeff Veldman and Evelio Miranda setting rows of chairs in Pioneer Pavilion



Lay Pastor Paul Kenyon using the pressure washer with pastors Abraham Swamidass & Carlos Anchetta assisting



Conference President, Titus Naftanaila leads prayer during camp pitch

BIBLE ENIGMA 1

I'm said to be better/ Wherever you're not/Your days, though, are like me/The Psalmist once thought.

Hint: Psalm 103:8-18

Kevin Wilkinson

BIBLE ENIGMA 2

We're mentioned in the Decalogue/Golden, silver, bronze or wood/And John himself said keep from us/We're made by man, and we're no good!

Hint: John 5:18-24

Kevin Wilkinson

Answers on back page of tomorrow's Camp Lamp.

PLANNED GIVING & TRUST DEPARTMENT

WE CAN HELP YOU MAKE A GIFT THAT WILL MAKE A DIFFERENCE

Make an appointment with Bill Ochs from our Trust Services Department to discuss estate planning during camp meeting. Appointments available Sunday - Friday morning. Ask the awesome attendant behind the counter in the Administration Building for help making an appointment or... call Bill Ochs @ 608-446-3452.

