

Lamplighter — Wisconsin

volume 3, Number 3

May, 2000

Cafeteria Ground Breaking

The Renovation has Begun

On September 20, 1998, the delegates to the Wisconsin Conference Constituency voted to begin revitalizing our Academy campus with a new cafeteria. Twenty months and \$503,320.33 later, eight shovels broke ground next to the existing Gym to initiate that project..

The campus of Wisconsin Academy is aging (despite the best efforts to extend it usefulness). The cafeteria continues to prepare and serve healthy nutritious meals from a facility that is over one-half century old.

State Representative, Eugene Hahn of the 47th Assembly District (which includes Wisconsin Academy) represented the state of Wisconsin in inaugurating this new project. He recalled the inception of

Wisconsin Academy with old Highway 16 proceeding directly in front of the campus. He recounted the small beginnings of our school and commended us on maintaining our ministry of Christian education and even expanding it.

While ground is broken, a challenge remains:

Project Cost \$985,000
Cash & Pledges \$770,000
New Money Needed \$215,000



*Wisconsin State Representative
Eugene Hahn*

With our camp meeting in June & the General Conference Session in Toronto, Canada taking us to mid-July, construction is scheduled to begin in August.

We are so near to achieving our goal! Your pastor has commitment cards for your convenience. If you can help put this project over the top, use the commitment card or call Don Corkum at 608-241-5235 (dcorkum@chorus.net).



Left to Right, Brian Hamilton, Dale Sinnett, Debbie Schufelt, John Thomas, Don Corkum, Eugene Hahn, Fred Miller, Herb Wrate

What's Inside

Madison A.S.I.	p.2
Camp Meeting Lowdown	p.3-4
Singles Ministry	p. 4
Hiway Widens, Lose Land	p. 5
Real Winners	p. 5
Wisconsin Budget Report ..	p.6-7
Herb Wrate to Retire	p.7
ABC Bargains	p.8

The Presidential View



On May 18, I saw anew that God's unique care for His children. On that day, Pastor Mike Martinez and I officiated at the funeral of Harold Friesen.

In 1956, Elder Friesen came to establish a church in Bridgewater, Nova Scotia near where I lived. As a young person who never had a Seventh-day Adventist church to attend, this was a great privilege and opportunity. I didn't know what an influence Pastor Friesen would have on my life.

He was the one to lead me to make my decision for baptism. He encouraged me (along with all the youth of the church) to get involved in service to Christ. He had us doing things we never thought we could do. He even had me sing a solo on a radio program—a miracle in itself! Many of those young people became leaders in the church. He poured his life into our development.

When I moved to Wisconsin, I realized that Elder Friesen's daughters lived here—Sandra Fitzgerald in Green Bay and Laural Sokolies in Racine. During the past year, Elder Friesen had moved to Wisconsin to be cared for by his daughters due to his poor health.

He has always kept in touch. During this past year we have been able to spend time together again—I was able to minister to him in the sunset of his life. God showed me how he brings people together to enrich their lives. He blessed my life as a young person and now, I could minister to him as a church leader. What a wonderful God we serve. Let's always be alert to His providential leadings. He cares for every detail of our life. Praise His name!

Madison A.S.I. Weekend

Adventist Laymen's Services and Industries (ASI) sounds so . . . , well boring! A name could **never** be less descriptive of a reality.

A.S.I. Meetings feature sweet fellowship, powerful eloquent speakers, & wonderful testimonies of how Christ can be brought into the marketplace. This year's Lake Union ASI meeting was held in Madison, WI, at the Madison East Church. Our own Sandy Miller of the Madison East Church is the current president of the Lake Union A.S.I.

This year's program featured:

- ◆ Participation by Denzil McNeilus, ASI President, and Dwight Hildebrand, the General Conference contact for ASI
- ◆ Report of Garwin McNeilus evangelistic series in India with over 3,000 baptized
- ◆ Reports of seven new churches planted by ASI chapters
- ◆ Report of the Lake Union Chapter of ASI building a new church in the Honduras
- ◆ Wisconsin Academy report on building a new church during their senior class mission trip
- ◆ "Out of the Fire" - Bryan & Penny Gallant told of God's blessing after a catastrophic auto accident; Dan Millen told of losing his job as a media journalist and his fiancé—all for the cause of Christ
- ◆ Terry Johnson shared God's providence and blessing as he served three presidents of the United States on the White House Honor Guard
- ◆ Greg & Lisa Budd presided over a Sunday morning prayer breakfast with thrilling reports of changed lives through prayer

. . . and there was so much more!



Sandy Miller



Terry Johnson

If you missed the Madison meeting, it is not too late for you! The *next* ASI gathering comes on the first weekend in August in Grand Rapids, MI. This will be the *nationwide* ASI gathering. You can share in:

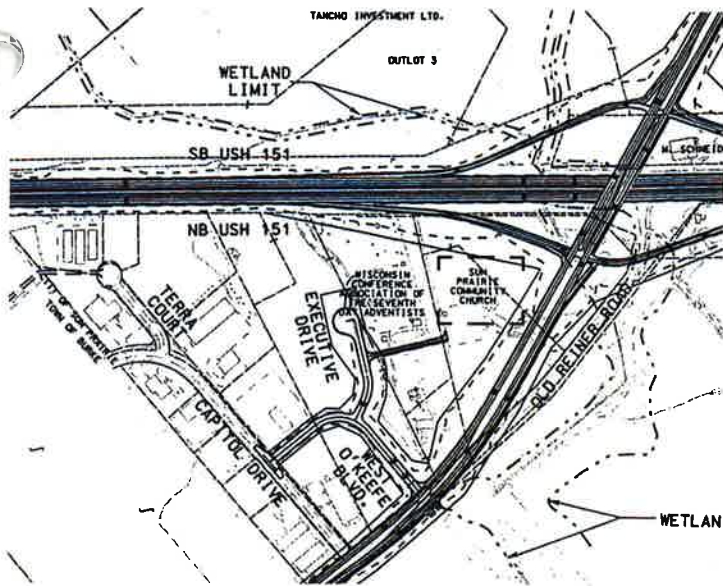
- . . . the fellowship
- . . . the inspiration
- . . . the joy in the Lord.

If you own your own business, practice a profession, or are self-employed, A.S.I. could be just what you need.

If you would like more information on the summer convention or an application for A.S.I. membership, contact Donald Corkum at 608-241-5235.

James Fox, Communications Director

Eminent Domain to Claim Conference Office Property



The Wisconsin Conference office is facing the loss of 20% of our land surrounding the office to the State of Wisconsin under the eminent domain law.

Due to the upgrading of Highway 151S to limited access status and the building of a full

interchange with on and off ramps immediately north of the office, we will lose a little over 5 acres. This is more than were originally told. We will lose our access on the front of the property from Highway 151 and will lose a strip of land on the front due to the off ramp from the interchange. We will also lose land across the back of our property for the new County Highway C. Our property will be split by a new road providing access from the back to our office. We will also lose land to a road that will provide access to the Sun Prairie Community Church just north of us. Access to the industrial park to our south will also be thru our land because their current road, Capital Drive will be closed to Cty Hwy. C access.

Our new entrance will be opposite a boulevard which will access a very large new subdivision being planned to the east of our property.

Hopefully, our land value will not be hurt from the loss of access to Hwy 151 due to immediate access from the interchange on Cty. Hwy. C.

We know our entrance has become hazardous due to the heavy traffic on Hwy. 151. We pray that we will be fairly compensated for the land we will lose.

Richard Habenicht

The Real Winners

A few years ago, at the Seattle Special Olympics, nine contestants, all physically or mentally disabled, assembled at the starting line for the 100-yard dash.

At the gun, they all started out, not exactly in a dash, but with a relish to run the race to the finish and win. All, that is, except one little boy who stumbled on the asphalt, tumbled over a couple of times, and began to cry.

The other eight heard the boy cry. They slowed down and looked back.

Then they all turned around and went back. **Every one of them.**

One girl with Down's Syndrome bent down and kissed him and said: "This will make it better." Then all nine linked arms and walked together to the finish line.

Everyone in the stadium stood, and the cheering went on for several minutes. People who were there are still telling the story.

Why?

Because deep down we know this one thing: What matters in this life is more than winning for ourselves. What matters in this life is helping others win, even if it means slowing down and changing our course.

Author Unknown

For Sale:

Farmette with 6.5 acres, 7 room farmhouse, 4 bedroom, 2 baths; just ten miles from Wisconsin Academy, 25 miles from Madison. Includes two barns, five acres of alfalfa, fruit trees & garden. Call Herb Wrate at 608-837-9576.

Camp Meeting then . . .



and Now!

Come to Wisconsin Camp Meeting 2000



Singles Ministry is a "Cool" Success

April 8 of this year, the Madison Community Church sponsored a singles ministries *get together*. Visitors came from the LaCrosse, Baraboo, Frederic, Wisconsin Rapids and Milwaukee areas. The activities included the singing group **Bless the Maker** from Arpin, WI. Following a delightful potluck fellowship meal, the group headed off to a prearranged trip to Olbrich Botanical Gardens in Madison for a warm and satisfying mid-afternoon activity. Later, the group enjoyed a cruise across Lake Wisconsin aboard the Culsack II ferry. Hiking activities

and vespers followed at Devil's Lake State Park.

Another outing is being planned for the future. If you would like to have more information or be included in the next singles fellowship, please call Jack McNeilus at 608-355-9869 or 608-356-1040.



CAMP MEETING CHOIR - We're planning for a choir to sing both weekends of camp meeting for the church service in the adult tent. Ed Peltó, Music Director at Wisconsin Academy, will direct the choir on the first weekend. Practices will be Friday evening following the opening meeting and Sabbath morning at 8:00 a.m. Practices for the second weekend will begin the first Saturday evening following the meeting and will continue throughout the week. The director for the second weekend will be Phyllis Corkum. Plan now to be there and participate in these special experiences.

CAMP MEETING BAND - We're planning for a band to play for Sabbath School song services both weekends of camp meeting. If you play an instrument, you are invited to participate. This provides excellent accompaniment for congregational singing. The coordinator is Jim Lynaugh from the Madison East Seventh-day Adventist Church. So bring your instruments and plan for practice in the Adult Tent at 8:30 Sabbath morning, June 10, 8:45 Sabbath morning, June 17.

*Phyllis Corkum, Camp Meeting
Music Coordinator*



Camp Meeting Comes Early to Wisconsin

"Almost Home"—June 9-17

Because of the General Conference Session in late June, camp meeting begins and ends one week early (June 9-17). Will we freeze or will we swelter? Will Westfield become "tornado alley" or will we have peace and tranquility? No one really knows about the weather but we do know that showers of blessing will be coming down.

Features & Speakers



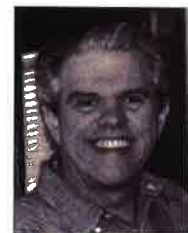
Walter Arties
Adult Tent
Praise Concert
2nd Sabbath Afternoon



Chet Damron
Young Adult Tent
11 am Sabbath Worships
& Evening Meetings



Dale Galusha
Adult Tent
Monday - Thursday
Evening



James Fox
Youth Tent
First Sabbath
11 am Worship



Roy Gane
Adult Tent—11 am, M-F
2:15 pm in Young Adult
Tent for Seminar



Sang Lee
Adult Tent
2:15 pm M-F
Health Seminar



Micheff Sisters
Main Tent Musical
1st Sabbath Afternoon



Loren Nelson II
Adult Tent
Ordination Service
First Sabbath



David Osborne
Adult Tent
11 am Worship &
Evening



Calvin Smith
Cafeteria
VOP Bible School Semi-
nar Monday-Thursday



Arnold Swanson
Adult Tent
6:30 am Early Worship
Sabbath - Sabbath



Walter Wright
Adult Tent
2nd Weekend
11 am Worship & Evening

Wisconsin Budget Goal

Through April, 2000

Church	Mem.	Goal thru for 2000	Goal thru 2-29-00	Amt Rec Goal 2-29-00	Amt Under 2-29-00	% of Goal Received
Sturgeon Bay	18	\$954.03	\$318.01	\$1,152.00	-\$833.99	362%
Fish Creek	13	\$562.23	\$187.41	\$606.00	-\$418.59	323%
Rhineland	109	\$4,423.85	\$1,474.62	\$2,995.77	-\$1,521.15	203%
Beaver Dam	24	\$1,267.45	\$422.48	\$844.21	-\$421.73	200%
Oconto	38	\$1,412.44	\$470.81	\$769.77	-\$298.96	163%
Reedsburg	50	\$2,179.14	\$726.38	\$1,128.00	-\$401.62	155%
Chippewa Falls	28	\$1,580.85	\$526.95	\$814.26	-\$287.31	155%
Almond	49	\$2,665.53	\$888.51	\$1,325.18	-\$436.67	149%
Baraboo	37	\$2,757.86	\$919.29	\$1,364.43	-\$445.14	148%
Rice Lake	134	\$9,119.24	\$3,039.75	\$4,226.27	-\$1,186.52	139%
Gillett	31	\$1,217.26	\$405.75	\$532.00	-\$126.25	131%
Janesville	76	\$3,101.94	\$1,033.98	\$1,350.11	-\$316.13	131%
Tomahawk Company	18	\$1,273.51	\$424.50	\$552.00	-\$127.50	130%
Clear Lake	104	\$6,522.01	\$2,174.00	\$2,528.49	-\$354.49	116%
Wausau	91	\$5,771.36	\$1,923.79	\$2,205.29	-\$281.50	115%
Frederic	69	\$5,923.82	\$1,974.61	\$2,158.31	-\$183.70	109%
Antigo	38	\$1,413.54	\$471.18	\$497.72	-\$26.54	106%
Delavan	58	\$4,319.97	\$1,439.99	\$1,466.95	-\$26.96	102%
Milton	146	\$7,190.34	\$2,396.78	\$2,410.11	-\$13.33	101%
Menomonie	53	\$1,144.71	\$381.57	\$359.31	\$22.26	94%
Madison	406	\$23,816.77	\$7,938.92	\$7,387.09	\$551.83	93%
Pound	49	\$1,325.18	\$441.73	\$406.29	\$35.44	92%
Fox Valley	226	\$13,603.36	\$4,534.45	\$4,044.67	\$489.78	89%
Oakland	37	\$2,206.22	\$735.41	\$655.90	\$79.51	89%
Prairie du Chien	20	\$614.91	\$204.97	\$182.25	\$22.72	89%
Beloit	66	\$2,296.10	\$765.37	\$676.14	\$89.23	88%
Oxford	61	\$4,540.81	\$1,513.60	\$1,233.17	\$280.43	81%
Evansville	34	\$2,477.34	\$825.78	\$663.43	\$162.35	80%
Moon	13	\$1,032.67	\$344.22	\$271.81	\$72.41	79%
Neillsville Company		\$68.43	\$22.81	\$17.00	\$5.81	75%
Marshfield	104	\$6,018.94	\$2,006.31	\$1,480.28	\$526.03	74%
Wisconsin Acad.	296	\$20,304.27	\$6,768.09	\$4,968.12	\$1,799.97	73%
Portage	113	\$5,731.38	\$1,910.46	\$1,336.00	\$574.46	70%
Hylandale	62	\$2,245.66	\$748.55	\$522.01	\$226.54	70%
Shawano	23	\$1,023.86	\$341.29	\$235.51	\$105.78	69%
Tomah	40	\$1,171.35	\$390.45	\$252.68	\$137.77	65%
Stevens Point	55	\$3,055.85	\$1,018.62	\$637.39	\$381.23	63%
Sheboygan	97	\$5,961.39	\$1,987.13	\$1,213.81	\$773.32	61%
New London	54	\$3,362.31	\$1,120.77	\$671.71	\$449.06	60%
Merrill	22	\$1,130.92	\$376.97	\$224.00	\$152.97	59%
Bethel	179	\$7,017.02	\$2,339.01	\$1,386.41	\$952.60	59%
Sparta	58	\$1,032.88	\$344.29	\$196.60	\$147.69	57%
Eau Claire	145	\$9,241.74	\$3,080.58	\$1,686.62	\$1,393.96	55%
LaCrosse	65	\$3,711.94	\$1,237.31	\$657.90	\$579.41	53%
Durand	45	\$2,891.24	\$963.75	\$467.31	\$496.44	48%

Milwaukee Central	238	\$13,727.47	\$4,575.82	\$2,216.44	\$2,359.38	48%
Green Bay	440	\$24,361.99	\$8,120.66	\$3,930.28	\$4,190.38	48%
Lena	70	\$6,026.24	\$2,008.75	\$971.63	\$1,037.12	48%
Watertown	46	\$1,894.43	\$631.48	\$301.57	\$329.91	48%
Lancaster	65	\$2,933.68	\$977.89	\$463.92	\$513.97	47%
Milwaukee N. West	156	\$15,121.54	\$5,040.51	\$2,382.96	\$2,657.55	47%
Richland Center	82	\$3,869.44	\$1,289.81	\$595.00	\$694.81	46%
Superior	58	\$2,034.56	\$678.19	\$296.49	\$381.70	44%
Hayward	33	\$2,704.73	\$901.58	\$359.15	\$542.43	40%
Clearwater Lake	79	\$3,127.27	\$1,042.42	\$413.79	\$628.63	40%
Madison Community	137	\$11,171.74	\$3,723.91	\$1,436.19	\$2,287.72	39%
Lakeland	41	\$1,657.95	\$552.65	\$170.90	\$381.75	31%
Racine	123	\$4,685.19	\$1,561.73	\$479.62	\$1,082.11	31%
Wisconsin Rapids	75	\$2,053.82	\$684.61	\$187.85	\$496.76	27%
Shullsburg Company		\$60.00	\$20.00	\$5.00	\$15.00	25%
Waukesha	214	\$12,457.61	\$4,152.54	\$929.83	\$3,222.71	22%
Sheboygan Sp. Co.	35	\$2,258.54	\$752.85	\$163.70	\$589.15	22%
Ashland	53	\$1,577.10	\$525.70	\$113.38	\$412.32	22%
Milwaukee S.E. Span.	68	\$2,215.71	\$738.57	\$147.82	\$590.75	20%
Racine Spanish	65	\$2,166.22	\$722.07	\$122.42	\$599.65	17%
Raymond	115	\$7,617.98	\$2,539.33	\$425.52	\$2,113.81	17%
Milwaukee C. Span.	164	\$4,827.21	\$1,609.07	\$266.79	\$1,342.28	17%
Wisconsin Conf.	303	\$20,421.48	\$6,807.16	\$1,079.34	\$5,727.82	16%
Spooner-Trego	8	\$339.29	\$113.10	\$16.97	\$96.13	15%
Milwaukee N. Span.	149	\$3,119.37	\$1,039.79	\$123.88	\$915.91	12%
Lake Country	39	\$1,988.30	\$662.77	\$72.29	\$590.48	11%
Kenosha	47	\$2,121.42	\$707.14	\$42.00	\$665.14	6%
Watertown Hisp. Co.	8	\$720.85	\$240.28	\$0.00	\$240.28	0%
Kenosha Hispanic	9	\$115.27	\$38.42	\$0.00	\$38.42	0%
TOTAL	6374	\$348,060.00	\$116,020.00	\$78,475.01	\$37,544.99	68%

Elder Herb Wrate to Retire



Herb Wrate, Educational Superintendent of the Wisconsin Conference, announced his retirement effective on August 31, 2000. Elder Wrate has thirty-eight years of denominational service and has earned respect and appreciation for his work in education in four conferences.

Elder Wrate's ministry includes serving as pastor in Evansville for a number of years, being part of our Lake Union executive committee, Wisconsin personnel committee, Camp Superintendent for Camp Meeting . . . and so much more.

We will miss Herb's pleasant spirit in the conference office and his zeal for the Lord's work. Our schools will miss his gentle hand and wisdom in dealing with matters from teachers to textbooks.

Herb & Phyllis enter a new field of service - retirement - where you get to do what you want for Jesus instead of what you have to! We wish you God's richest blessings and we thank you for your service to your Lord.

The LampLetter is the Newsletter of the Wisconsin Conference of Seventh-day Adventists.

Donald Corkum President

Brian Hamilton Secty/Treasury

James Fox Editor

Kitty Crary Secretary

Your comments and submissions are welcomed:

Wisconsin Conference of Seventh-day Adventists.

P.O. Box 7310

Madison, WI 53707

Attn: James Fox

or

jfox@chorus.net



Adventist Book Center "Camp Meeting 2000!"



Special Sale Days (June 11-16)

- Sun. **Super Tent Sale 9:00am Main Tent**
- Mon. **Bible Sale & Senior Citizen Sale**
- Tues. **Kids Day**
- Wed. **Spirit of Prophecy Day**
- Thurs. **Music & Video Sale**
- Fri. **Cookbook & Grab Bag Sale**

Food Specials & Samples!

Special Camp Meeting Prices and new food samples all week long! Check out our food price list in the camp-meeting catalog insert, or ask for one at the ABC!

New!

MorningStar Farms Stuffed Sandwiches:(All Vegetarian!)
Burger & Cheese - Ham & Cheese - Pepperoni Pizza

Mini Corn Dogs!

Tartex (It is Back!)

Better Than Milk Rice Original (Enriched!)



Visit us on the web at: adventistbookcenter.com

Calls always toll free at 1-888-266-5748

Special ABC Days & Hours **ABC Closed June 1-8**

(For Campmeeting Setup)

ABC Open at Camp Go-Seek June 9-18

ABC Reopen in Sun Prairie June 19!

Call for hours toll free: 1-888-266-5748

Wisconsin Conference of Seventh-day Adventists
P.O. Box 7310
Madison, WI 53707-7310

RETURN SERVICE REQUESTED

Non-Profit Organization
U.S. Postage Paid
Madison, WI 53707
Permit No. 1107