

Lampletter — Wisconsin

Volume 7, Number 1

March 2004

Sow 1 Billion Takes Off

In 2003, a generous North American donor made a wonderful offer to the world church — he would pay for the printing of **One Billion** cards offering Bible Studies and supply them without charge to the church. The Church would only have to come up with the money to mail them or the manpower to distribute them by hand.

The Wisconsin Conference requested 700,000 of these 1 Billion cards for distribution in our state. Pastors met with church boards and together they decided how many invitations to Bible study they could handle. When the discussions were finished, English churches in Wisconsin had committed to mailing 583,000 brochures with church members personally distributing another 90,000. Our Hispanic churches had accepted the challenge of distributing another 65,000 invitations in the Spanish language.

"The postage to mail these brochures was over \$56,000," reported Kitty Crary, secretary to the President. "It was an awesome logistical task to get everyone's order prepared with mailings to the exact zip codes the churches' specified."

The goal of this mailing is the initiation of 5,000 Bible studies in Wisconsin," stated Elder Don Corkum, President and Personal Ministries Director for the Wisconsin



583,000 Bible study invitations were mailed in Wisconsin

Conference. "People can respond by mailing the card back, they can call a toll-free number, or they can sign up using the internet. *But it is the personal follow-through by people that will determine the success or failure of Sow 1 Billion,*" reported Corkum.

"This outreach will dramatically impact our fall evangelism," stated Elder James Fox, Evangelism Coordinator for Wisconsin. "Successful evangelistic campaigns throughout the world have one common factor — the great amount of effective pre-work done in giving Bible studies and visiting interested people," said Fox. "There is nothing more thrilling than conducting an evangelistic series where many Bible studies have been given by the church people preparing the way."

On Tuesday morning, February 24, we received our first two responses. On Wednesday, there were 80 cards. On Thursday, there were 138 cards and 177

telephone requests. On March 1 & 2, 419 cards came in and 16 telephone requests! It is a major challenge to the conference office secretaries to record these interests and send them on to pastors and lay Bible instructors who will visit them and provide the lessons. What a great problem to have!

"God is prepared to do miracles for us as we do His work. We need more workers in our churches who can give Bible studies," said Elder Corkum. "We have the training materials and our pastors are delighted to instruct and support lay Bible instructors in this work. We simply need more people willing to learn how to do this great work."

Continued on page 2

What's Inside

Facing a Dilemma	p. 2
AdventistCHIP's & Mission	p.3
Mexican Mission	p.4
When Less Equals More	p.5
Financial Report	p.6-12
Camp Meeting 2004	p.13
W.A. Week of Prayer & Outstanding Achievement	p.14
New Member Stories	p.15
Hispanic Youth Sabbath	p.16
WI Adventist News	p.17
WI Budget Report	p.18-19
People in Transition	p.20



Facing A Dilemma

2004 is one of the greatest years of opportunity in the history of our conference. We face this opportunity in a time of great challenge. It is a time we need to call on God to help us. It is also a time we need to be faithful.

Here are some opportunities:

- We anticipate about 5,000 Bible study requests coming to us through the Sow 1 Billion outreach
- There are more requests for health programs than ever before—Our world needs right now the knowledge God has given us regarding health
- There is a multiplying of new church plants and they need leadership and resources
- This year will see more church building taking place than any year in the past decade
- The Building to Serve project needs \$200,000 to complete
- The Faith on Fire Camporee needs 1000 volunteers
- The faith goal for Hope for our Day is to have 150 outreaches. This requires many lay people and youth to lead out in these adventures for God

Yet, we face all these opportunities at a time when resources are limited. All across North America, there are cutbacks in the work due to increased costs and less income. We also have challenges to balance the budget for the year. In times of financial challenges many people have to work more and may have less time available.

What is the solution to these challenges? Let's call on God to help us meet these opportunities

and go forward glorifying His name. Remember . . .

- In Genesis 18:14 God asked Abraham and Sarah, "Is anything too hard for the Lord?"
- When God asked Mary to be the mother of Jesus she asked how it was possible and God said, "For with God nothing shall be impossible." Luke 1:37

However, when God asks us to do what seems impossible, He also asks **us** to move forward in faith. He doesn't do the work for us but through us—we need to make the sacrificial commitments.

This is the time for every member to respond to God by saying;

- "I'll do what You want me to do"
- "I will be faithful in my tithes and offerings"
- "I will give the interests of your kingdom the priority they need"
- "I will keep close to you and move forward on my knees."

With these responses from members of our conference, we will be singing the Hallelujah chorus at the end of this year; We will be glorying God for the miracles He has wrought through us; Let's give God the response He needs right now!

Don Corkum, President



Kitty Crary and Elder Don Corkum received the first two cards from Sow 1 billion on Tuesday, February 24

Continued from page 1

Is God speaking to your heart, friend? Could you help by dropping off a few Bible lessons each week?

Pray for God's continued blessing on men and women who are looking heavenward for spiritual light . . . Pray for more Spirit-filled harvesters to enter the work . . . For in Wisconsin, the harvest is indeed ripe!

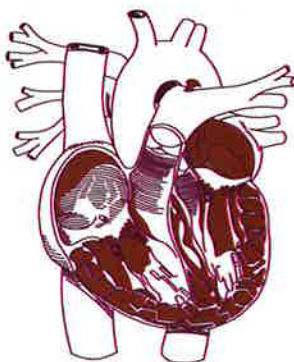
James Fox

Adventists and C.H.I.P.'s

Just before moving to America's Dairyland I began experiencing a health issue. I decided to do something about it—I made an appointment with an M.D. who also knows wholistic medicine. He did a simple test and told me I had a "sluggish pancreas." He was being nice but what he meant was I was a borderline Type II diabetic. He made a series of lifestyle recommendations and I became a vegan on the spot. At the time, I had a PSA of 4.2. Within five months my PSA dropped to 2.8.

If I had not been moving to Wisconsin so soon, I would have done the live-in program there. God had a better idea, however. Last year one of our church elders, Carol Mertins, sought and received support from our church board to receive training for Hans Diehl's C.H.I.P. program. She conducted it the first time last fall. I immediately recognized the diet and lifestyle as being what Dr. Corros had encouraged me to do. The program was an incredible journey in learning how to live to enhance health (there's more to healthful living than not eating meat).

Several church members attended, including one of our newer members, Beverly Gagliano. She



maintains that the Lord's hand was in all of it. I concur, but I also think you'll be interested in the impact CHIP has had on her life. "She has significantly reduced the amount of insulin she must take each day; her blood pressure is now low. Beverly's cholesterol has dropped by over 40 points and her weight has dropped dramatically" (she says she never really worked on this; it just came naturally), her back is much stronger and she's walking! A year ago New Year's, I helped carry her in her wheelchair downstairs to our fellowship hall; this year she bounced around the kitchen like a ping pong ball. (Wonder who she'll give that wheelchair to?)

Our second presentation of C.H.I.P. will be this March. If you live within a drivable distance I encourage you to be a part of the program: your investment will pay you high dividends the rest of your lengthened life. The program begins March 7 and continues 4 nights a week through April 1. For further specifics, to register, or to learn how your church can sponsor CHIP, call the Waukesha church (262.544.4043) or Carol Mertins (920.261.4344).

John Glass, Waukesha Pastor

Members in Mission

So many times in our life, God answers our prayers. I had a time filled with God's blessing in answered prayer.

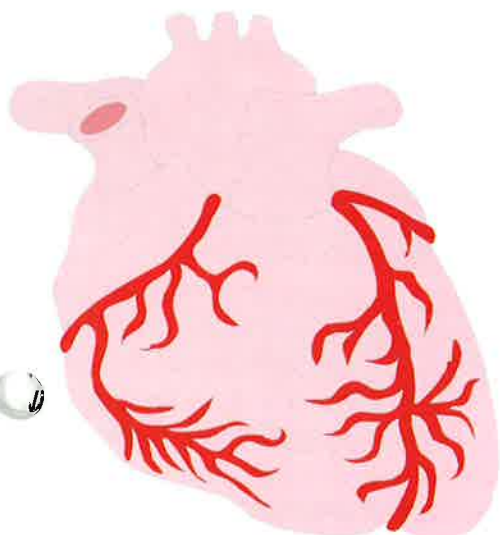
It started many months ago when my wife, Marie, told me that a mission trip to Romania was being planned. I thought that there wasn't any reason for me to go because there were seven pastors going—what would they need me for? My ministry is Christian story telling with illustrations for children. One day my pastor, Steve Aust, asked me if I would be interested in helping him with the youth in Romania. I began praying that God would use me in a mighty way to make a difference with the youth in Romania—just the chance to work for the Lord made me so excited and happy!

We arrived on a Friday night, and had our first youth and VBS meeting on Saturday night. There were only about twenty kids for VBS, and twelve in the youth. On Monday, the kids in youth were leaving to go to high school in another town about two hours away. Where were we going to get kids in youth for the week?

My interpreter was a woman who taught in the public school in town. She taught English and Reformed Orthodox Religion classes. She asked me if I would come to her school and put on my programs for the children. So every day for the whole week I went to the public schools in town doing my illustrations. The kids loved it so much that the children and youth came



Continued on page 5



Mission to Mexico

"You paid to do that?" Those were the words that many of us heard as we prepared to go to Mexico for a one week mission trip. Friends and family members could hardly believe that we would actually pay money and even use our vacation time working, *especially* outside of our country! But, that is exactly what we did.

On Wednesday, April 19, 2003, we eagerly began our trip from Wisconsin to Ciudad Victoria, located 200 miles south of Brownsville, Texas. The group, totaling 35, consisted of members from many different Seventh-day Adventist churches including Sheboygan, Green Bay, Fox Valley, and LaCrosse in Wisconsin, as well as several from Texas. The project was headed up by Pastor Bob Stauffer of the Sheboygan district. We were also joined by Otoniel Reyes, Vice President of the Lake Union Conference, who coordinated our evangelistic outreach program and housing as well as Jose Vasquez, a pastor in Indiana who held evangelistic meetings during the trip.



Pastor Delmar Austin moves concrete for the school play area

After a lot of driving and a bit of a delay getting our bus across the border into Mexico, we finally



The Central Seventh-day Adventist Church in Ciudad Victoria, Mexico

arrived in Ciudad Victoria late Sunday night. Bright and early the next morning, we were ready to begin our work.

Our mission was to finish a concrete play area for the local Seventh-day Adventist school. Since we had so many people, we were able to split into two groups and send a smaller group to another work site about 10 miles away, in a town called San Jose De Flores. The project there was to put up walls for a new church building. Each day we shoveled sand and rock to be mixed into concrete, moved the concrete in wheelbarrows or buckets and watched the building grow. Lindsey Shotwell, 13 (Fox Valley) said, "It was a lot of fun working. It was interesting to talk and work with the people." Both projects progressed quickly and by the second day, the walls of the church building were up with one-half of the play area finished.

During the day, the school children had English classes (just like we have Spanish classes) and some members of our group went into the classes and helped the students understand how to say different words. We also told them

a little about Wisconsin (most of them have never seen snow). When asked what his favorite part of the trip was, Matthew Klug, 14 (Merrill) said, "teaching kids English and helping level concrete."

Although our main focus was on the physical work, we held evening evangelistic meetings as well as a Vacation Bible School (VBS) program for the children. After working on the project sites for most of the day, we would clean up and head out to one of three evangelistic meetings or to the VBS site located in San Jose De Flores. Even though we enjoyed being able to do the physical work, these evening meetings were the highlight of our trip. Those who were not preaching participated by singing a special song for the service or by just visiting with and



Bernadette Dorin helps children color pictures at VBS

getting to know the local people. The average attendance at VBS was between 25 and 30 children—those involved watched the sparkle in the children's eyes as they listened to the Bible stories or

Continued on page 5

When Less Equals More

During tough economic times, everyone has to “make do” with less. The LampLetter you are holding illustrates that with God’s blessing, **less brings more!**

Through a relationship with a new printer, we are able to produce the LampLetter in full color and mail it for less money than the old black and white issue. This may only be an introductory offer; we may never see this type of pricing again. For now, it is a very good deal with very real savings. We just didn’t want you to think we decided to *splurge* during times of financial constraint.

Even in economic down times, God can often show us a way to achieve our goals more frugally than we would have thought possible.

James Fox, Editor

Mexico—Cont’d. from page 4

colored pictures of Jesus. Crayons are rare for them, so they treated them with great care. “VBS was a lot of fun” said Brennan Hallock, 14 (Hylandale), and “trying to talk with the kids and do the crafts with them.” Felicia Gordon, 16 (Sheboygan) said her favorite part of the trip was, “working with VBS kids, and how they looked up to us.”

The people of Mexico are very warm and loving. We never left a meeting without at least one hug, and usually many more than that. They wanted to know about us, our families and our lives. Brad Austin, 17 (Green Bay), said that he enjoyed “meeting the people there who were so friendly.” However, we wished we could speak more Spanish so that we

could get to know them better. Trevor Hallock, 13 (Hylandale), did learn a few Spanish words and said that he enjoyed trying to talk with the local people.

We were blessed by the efforts of the local people to make sure that we were well taken care of. Every day, several ladies from the local churches came and prepared our meals. We enjoyed the authentic food very much and Charissa Sykes, 15 (LaCrosse), said, “trying the different foods was one of her favorite parts of the trip.”

On our final night there, the people threw us a “Thank You” fiesta with food, games, confetti, candy, gifts and a special program by the school children. We went to serve the people in Mexico, but we received

the greater blessing. The words of Pastor Stauffer rang true: “You never feel better than when you are doing something for Jesus.”

*Laurella Case,
Green Bay Church*



The Brichwood Group began meeting in January, 2004, in a public school. The group formed as a church plant with people from public evangelism forming its core fellowship.

Members, Cont’d. from page 3

to the meetings at night at our church. Between seventy-five and one hundred children came for VBS, and fifty to seventy-five for youth. I was busy working and all the children responded to my stories and illustrations. I can’t believe how God worked out a miracle right before my eyes! According to the Romanian Conference President, it was totally impossible to get into the public schools like that. This was truly a miracle! God is so wonderful!

*Doug Burgess
Wisconsin Academy Church*

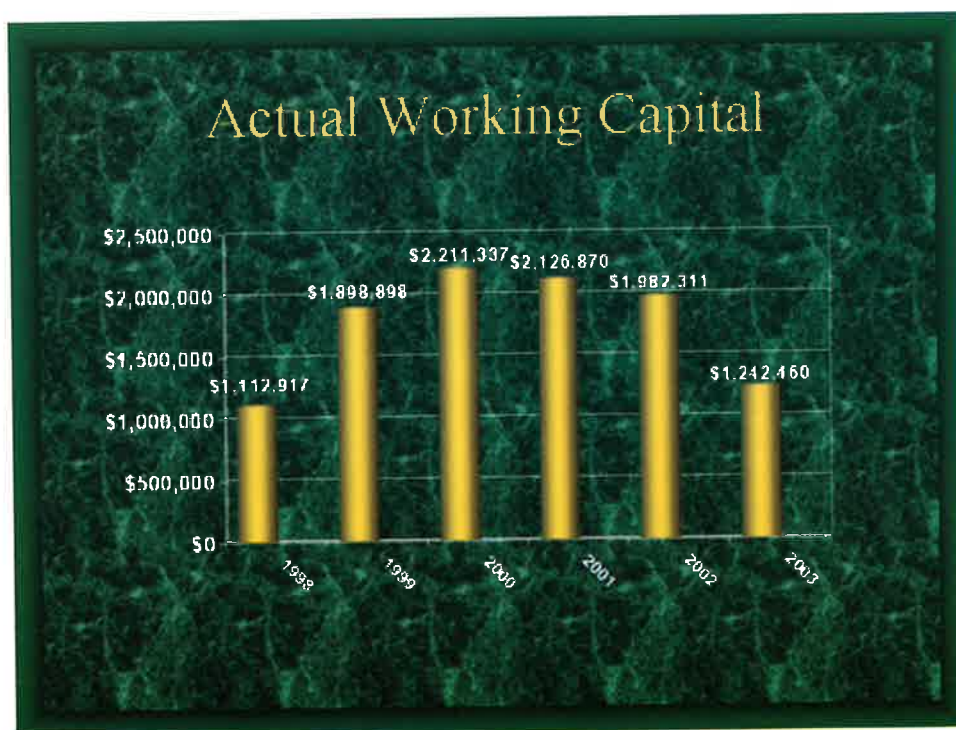


Matthew Klug (Merrill) and Trevor Hallock (Hylandale) leveling concrete at the school site

2003 Financial Report

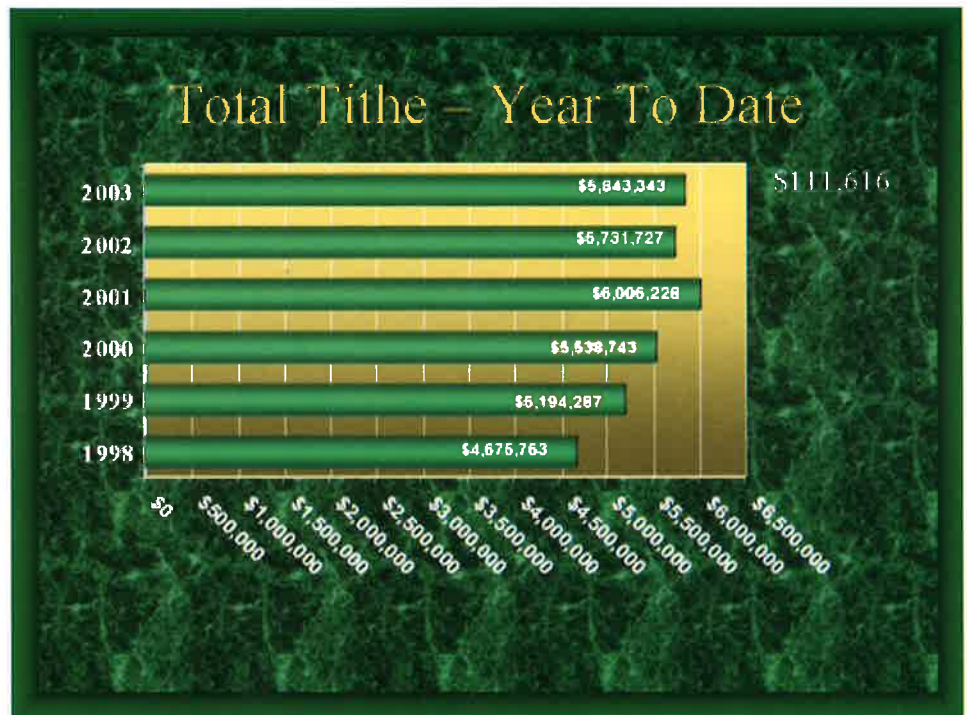
Where did the Money Go?

The dust has settled (financially speaking) for 2003. Last year was a challenging year for the Wisconsin Conference. This has been the most difficult year that I have faced in almost seven years as treasurer. Our recommended working capital dropped from 136% to 73%—a precipitous decline of 63%. This situation has occurred because we were faced with some unexpected and unusually large expenses without the corresponding income to offset them. The detail is quite extraordinary:



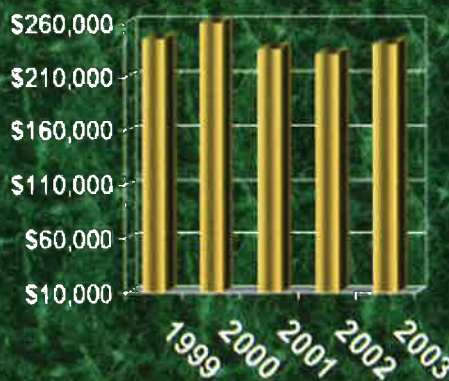
The accompanying graph illustrates our actual working capital which is comprised of current assets less current liabilities.

Tithe returned for the Lord's work was \$5,843,344 which represents a 1.95% increase over 2002. We praise the Lord that we had an increase but the increase did not keep pace with inflation which was 2.11% in 2003.



Wisconsin Budget

- 2003 - \$239,138
- 2002 - \$230,710
- 2001 - \$235,655
- 2000 - \$259,947
- 1999 - \$244,285

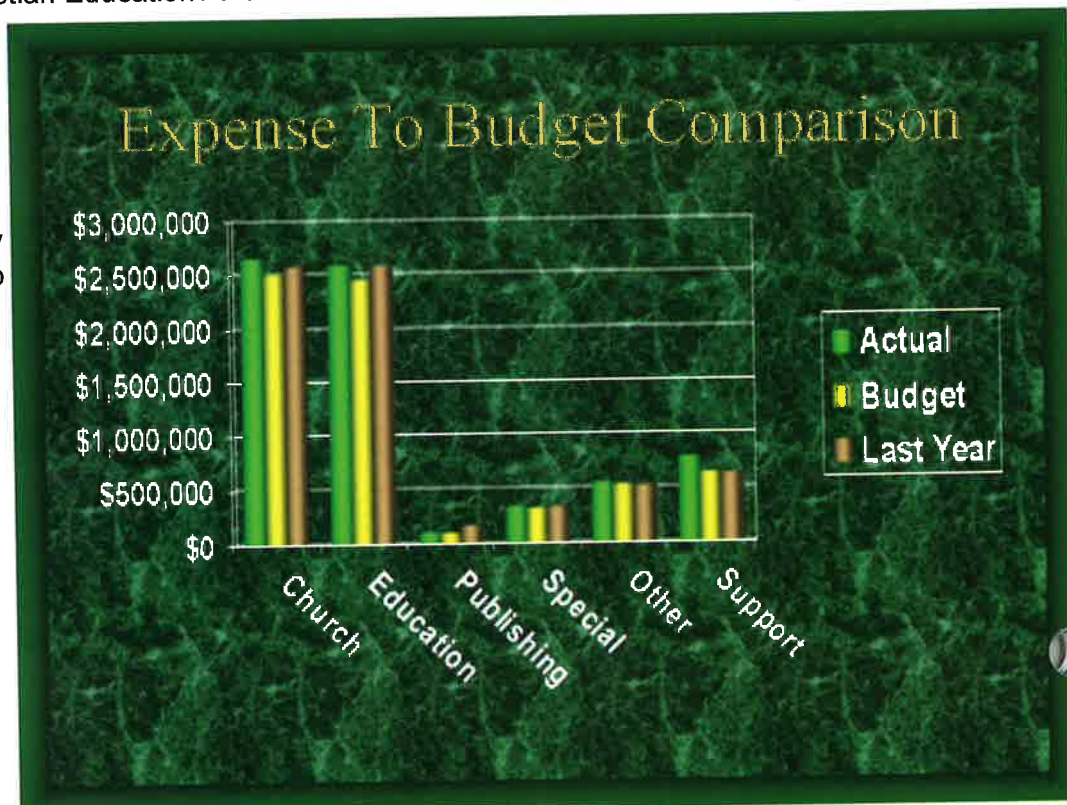


One of the major areas that the Conference looks to for the funding of Wisconsin Academy is Wisconsin Budget. Last year \$239,138 was donated. This is a slight increase from the year before. However three special appeals were made because of the additional needs at WA. The giving to Wisconsin Budget has remained at the \$200,000-250,000 mark for the last fifteen years. But the buying power of money is not the same today as in was say in 1990. So the conference increasingly has to look to other sources for funding WA. And we are fast running out of sources without making major cuts in pastoral, departmental or other support services to the field.

This should raise some questions in our mind. Why hasn't Wisconsin Budget increased at the same percentage as tithe? It must be because members are not giving to Wisconsin Budget as a percent of their earning. Instead many are giving a flat amount which has not changed for years. It may be that some members are not giving to Wisconsin Budget at all.

Enrollment appears to be on the decline at WA. Why is this? Do we have fewer academy age young people? Are there other reasons such as finance, or not desiring to send their children away from home? Do we not understand the value of Christian Education? How should the conference relate to this issue? As the enrollment declines, the financial responsibility on the Conference increases proportionately. These are issues that we are seeking to find answers for. A taskforce has been organized to give study to the many issues related to Christian Education and provide the K-12 Board and Conference Executive Committee with recommendations.

The operating activities of the conference are summarized into six major categories with each having a number of subcategories. The two largest categories are Church Programs and Education Programs.



Church Programs:

Pastors & Bible Workers
Camp Meeting
Ministerial Department
Church Building
Evangelism
Youth Camp
Personal Ministries
Campground
Stewardship
Church Ministries

Publishing Work

Literature Evangelist Salary and Benefits

Education

K-10 Operating
Youth Education Scholarship
WA Operating
Education Department
Endowment Funds
Church School Building
Andrews Operating
WA Building
K-10 Text Book Fund
Andrews Building

Special

Communications
Insurance
Community Service
Trust Services
Health and Temperance

Matured Trusts

Religious Liberty Litigation

Other

Annual Ingathering
Retirement
Wisconsin Budget

Support

Accounting & Auditing
Office Operating & Maintenance
Convention & Meetings
WA Industry Buildings
Men & Women's Retreats
Academy Farm
Printing & Copy Fund
Parsonage Rentals
Property Blanket Program
General Administrative Expense
Group Medical Fund

Year to Date Budget Comparison

Expense Categories	Actual	Budget	+/_
Church Programs	\$2,752,623	\$2,498,864	\$253,759
Education Programs	\$2,581,060	\$2,444,148	\$136,912
Support	\$897,571	\$637,714	\$259,857
Total	\$6,231,254	\$5,580,726	\$650,528

As the graph illustrates three of the major categories (Church, Education and Support) are significantly above budget. These three areas represent almost \$650,000 of unanticipated expenses.

Church Programs accounted for almost 40% of the out-of-budget total. The Pastor and Bible Worker function incurred almost \$80,000 of moving and relocating costs which was \$50,000 above our budget. Some of these expenses began with a rather large number of pastoral moves in 2002 but expenses carried on into 2003. For example duplicated housing cost (as a pastor seeks to sell their previous residence) can continue for up to one year.

The general evangelism expense of \$299,426 includes \$150,000 of 2002 Hope for the Homeland advances made to local churches that were subsequently expensed in 2003.

The campground incurred \$47,730 more expense than anticipated but also had additional revenues that helped to offset the expense.

Church Programs

Expense Categories	Actual	Budget	+/_
Pastor/Bible Worker	\$1,829,815	\$1,782,754	\$47,061
General Evangelism	\$299,426	\$105,741	\$193,685
Campground	\$208,285	\$160,555	\$47,730
Total	\$2,337,526	\$2,049,050	\$288,476

Education programs account for 21% of the out-of-budget total. The K-10 program cost \$75,000 more for employee expense than was budgeted. We had one extra teacher than anticipated. That meant one more grade school was permitted to remain open with fewer than six children. We love our children but an "unplanned for teacher expense" raises havoc on the conference budget as does an "unplanned for child" on your home budget. There was an unusually heavy need for substitute teachers last year (pregnancy leave, an accident and other major health challenges) and this figure also includes a termination settlement with one former teacher.

Education Programs

Expense Categories	Actual	Budget	+/-
Church School Opr	\$1,483,923	\$1,408,835	\$75,088
Academy Operating	\$673,745	\$518,744	\$155,001
Total	\$2,157,668	\$1,927,579	\$230,089

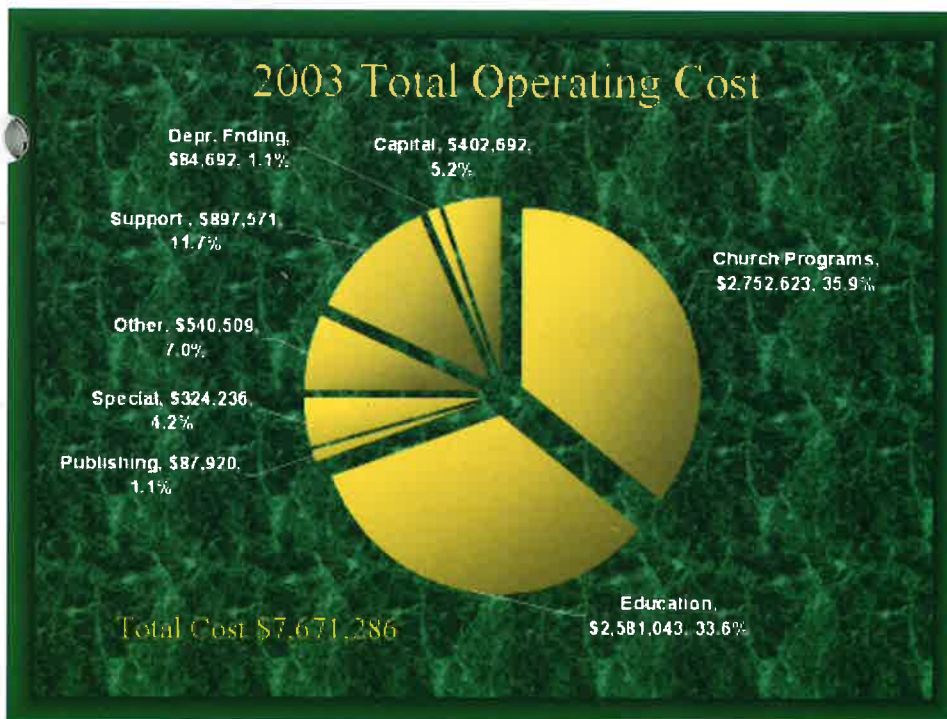
WA Appropriations

Operating Funds	\$673,745
Yes & Yes +	\$75,318
Building & Equip	\$97,175
Total	\$846,238

Wisconsin Academy found itself in a cash flow crisis last summer. The new Business Manager found that he had \$36 in the check book with over \$120,000 in outstanding bills. The girls' dorm roof could not wait longer to be replaced and the two year old furnaces in both dorms gave out. These furnaces were no longer under warranty. And the problem that caused their demise appears to be heavy contaminates in the hot water lines that circulate heat throughout the dorms. (Something to do with an aging building) Last year, the conference found itself having to come up to the table with almost \$850,000 for the needs at WA. We budget for about a half million per year.

The remaining 39% of unexpected out-of-budget cost came in the Support area. This was almost entirely due to astronomical increases in employee medical costs. We have dramatically increased funding and for the first time have begun charging employees a premium.

In each of these areas we are actively working to see that they don't repeat themselves or manage those items that appear to be on going issues.



Many times people ask "what happens to the tithe that we give?" the last two pie graphs give a percentage and dollar break-down of tithe and non-tithe funds and how they were used in 2003.

2003 Income & Expense Summary

Actual	Budget	Budget	+/- Budget	Prior Year
Total Tithe	\$5,843,343	\$5,674,409	\$168,934	\$5,731,727
Less Remitted to:				
General Conference	\$993,368	\$964,649	\$28,719	\$1,003,052
Union Conference	\$540,609	\$524,882	\$15,727	\$544,514
Special Assistance Fund	\$27,473	\$25,784	\$1,689	\$28,037
Net Retained Tithe	\$4,281,893	\$4,159,094	\$122,799	\$4,156,124
Non-tithe Income	\$2,644,819	\$2,133,306	\$511,513	\$2,674,153
Total Income	\$6,926,712	\$6,292,400	\$634,312	\$6,830,277
Less Operating Expense				
Church Programs	\$2,753,055	\$2,498,864	\$254,191	\$2,573,725
Education	\$2,581,043	\$2,444,148	\$136,895	\$2,578,956
Publishing	\$87,920	\$87,920	\$0	\$152,344
Special	\$324,236	\$316,290	\$7,946	\$321,762
Other	\$540,509	\$524,883	\$15,626	\$515,855
Support	\$897,571	\$637,714	\$259,857	\$621,413
Depreciation Funding	\$84,692	\$106,290	-\$21,598	\$103,627
Capital Funding	\$402,692	\$21,148	\$381,544	\$129,416
Unallocated	-\$432			-\$22,263
Total Operating Cost	\$7,671,286	\$6,637,257	\$1,034,461	\$6,974,835
Net Increase (Decrease)	-\$744,574	-\$344,857	-\$400,149	-\$144,558
Beginning Fund Balance	\$2,031,908	\$2,031,908	\$2,031,908	\$2,176,467
Ending Fund Balance	\$1,287,334	\$1,687,051	\$1,631,759	\$2,031,909

2004 Finances—What Does this Year Hold?

We have entered into 2004 with diminished reserves and operating costs running about \$170,000 above prudently budgeted income. How did we come to have so much additional expense?

We have been forced to put more funds aside to cover the retirement cost of the soon to retire baby-boomer employees. That alone has added an extra \$200,000 of expense. Medical costs have increase dramatically. When times were good we added three extra budgets to the pastoral workforce. These funds were divided evenly between the Anglo and Spanish work. And finally Wisconsin Academy has required greater infusions of our resources.

We balance this year's operating budget by:

1. Voting to carry forward the unused tithe fund balance of \$126,000 from 2003.
2. Freezing wages for 2004.
3. Charging employees a premium for medical insurance.
4. Reducing one pastoral budget.
5. The officers, departmental directors, and treasury staff electing to take a reduction in their travel budget benefits. (This saved us from reducing our secretarial help)
6. Appropriating \$17,000 from the farm account.

Most of these are temporary fixes designed to give us a little time to

study our challenge in education and promote a stewardship emphasis. However, if no meaningful financial solutions are found, we are going to have to come together and make some very difficult choices.

This has been a sobering report. But I would remind you that God often brings trials upon His people to teach them lessons of submission, patience, and faith. God leads His children by a way that they know not, but He does not forget or cast off those who put their trust in Him. Please pray that God will lead us through this time of challenge and that we will come forth refined as gold.

Brian Hamilton, Treasurer

Wisconsin Camp Meeting—June 18-26, 2004

Theme: "Return unto Me"



Carmelo Mercado and his wife, Rosanne, will present the Early Glow meetings—he is the new Hispanic Ministries Coordinator for the Lake Union



Mark Finley is Speaker/Director for the It Is Written Telecast—he is our featured speaker for the opening weekend



Jennifer LaMountain is a gifted vocalist—she will be our featured musician for opening weekend and will present a sacred concert Sabbath at 4 P.M.



James Gilley is a vice-president of the North American Division for Ministerial & Evangelism—he is our featured evening speaker throughout the week



Des Cummings Jr. is Executive Vice President of Business Development for Florida Hospital. Des is our featured speaker for the closing weekend

Wonderful Daily Seminars



Steve Wohlberg is the popular author of AntiChrist Chronicles, Israel in Prophecy, and The Left Behind Deception—his seminar will focus on prophecy



DeWitt Williams is Director of Health Ministries for the General Conference—his seminars will focus on health



Ron Flowers co-directs the Department of Family Ministries of the General Conference—his seminars will focus on family life



Len Wenzel works in television production with 3ABN. His seminar will focus on studying the night sky and how the stars tell the story of Salvation



Ric Swaningson is a pastor/evangelist in Milwaukee, WI. His seminar will focus on winning souls in harvest evangelism.

Camp Meeting—Locating Department Note

Almost all campsites have been reserved for Camp Meeting 2004. If you have made a reservation and find that you can not attend, please contact Locating at the Wisconsin Conference office (608 241-5235) as soon as possible—others would be glad to reserve your vacant site.

The Campsite Cancellation Policy is:

- ✓ Full refund of deposit for cancellations made before May 5
- ✓ Loss of 50% of deposit for cancellations made after May 5
- ✓ Loss of 100% of deposit for cancellations made after May 26

See you at Camp Meeting.!

Wisconsin Academy Week of Prayer

Week of Prayer was held at Wisconsin Academy during the week of January 19.

About 75-80% of the students publicly committed their lives to Jesus, asking God to take full control of their lives. Ken Muelemans, Class of 2004, shares his experience:



Kris Eckinroth

He gave. His answers may not make sense to us now but they will.

Week of Prayer was time for us to take a break from the grind of the school week and spend time with our Creator. It was a wonderful time to fill up our spiritual gas tanks!



WA Student Praise Team: Marlyn Santiago, Sara Schaetzka, Mary Jean Rogge, Kelly Gauger, Brad Austin, Ken Meulemans, David Dorin

Laura Hokanson
Wisconsin Academy

Student Achievement in Conference Schools

Each year students in grades 3 through 8 are given the Iowa Test of Basic Skills to determine their level of achievement. We do this to determine students achievement and to help us fine tune the curriculum to better meet student needs. The student average for this year was 67.2 percentile. To put this in perspective, this shows that our students' average score is greater than 67.1 percent of all students taking this test nationwide.

To better illustrate the quality of our scores, we can look at school averages. Our school averages are at 77.2 percentile. This means that our schools average higher than 77.1 percent of all schools in the nation. *Wisconsin Conference schools are in the top 23 percent of all schools nationwide!*

If we look at the natural abilities of our students, our scores look even better! Each year our students in grades 4 and 7 are given a cognitive abilities test to determine their level of natural intelligence. Each year our students are shown to be of average

mental ability, yet, for the past 4 years our students have obtained scores that are from .7 to 1.2 grade levels above what would be expected based on their natural abilities. *Our students are working at a higher academic level than v would expect based on their levels of intelligence.*

Wisconsin students in our Church School program are getting a quality academic education. While this is important and one of our main goals, it is not the main reason we sacrifice to provide this program. Even more important is the fact that every day when our children walk into the classroom they will be with a teacher who will teach them Bible truth and God's great love for them. Each day they will be encouraged to enter into a personal relationship with their Savior, Jesus Christ! That is what gives meaning to our program!

We must always remember:

"Christian education is not expensive, it is priceless!"

Ken Kirkham
Education Superintendent



- Prayer: an utterance of praise, thanksgiving, and confession. Is there any better way to start off a new semester than a whole week of prayer, praise and thanksgiving? Each night the campus praise team led us in singing and praise.
- Kris Eckinroth, from Southern University, was the guest speaker. His topic, "How to Know God Better," challenged us to spend some time with God each day, even if it is only five minutes. He pointed out that unless you really spend time with your Creator, you will be swept away when troubles and fallacies appear.
- God's plan for our lives isn't just a career or a job—it's our whole life and He longs for us to make Him part of it. He wants us to put our lives fully in his hands so He can direct. We need to believe in His leadership and do what he asks of us.
- God answers prayer—It may not be the answer we are looking for, but He always answers in some way. In heaven, we will look back on all our prayers and requests and praise God for the answers that

New Members Stories from Madison East

As part of ongoing evangelism efforts, Madison East Church has seen an increase in new members in the last year. We took time to talk with some of the newer members to see what their experience in the Adventist church has been.



Adrian, Heidi and Isaiah Crab

Adrian and Heidi Crabb were members of the Rastafarian religion who read the Bible and prayed daily before becoming Adventists. Adrian was dealing marijuana on a large scale, and using it himself as a sacrament in the Rastafarians religion. Adrian noted, "We were under quite a bit of stress before coming to the church. Heidi was pregnant, we didn't have any idea of how to deal with money and little family support." Adrian and Heidi first encountered Adventists through 3ABN. They were inspired by what they saw and decided to attend the prophecy seminar by Steve deLonge in the fall of 2002. Their experience at the seminar led to their baptism in October 2002. After baptism, the Crabbs began to see gradual changes occur. "I gave up smoking before I was baptized, but then I started again", noted Adrian. "I was trying to resist on my own. After trying to quit numerous times, I just asked God to take away the addiction. The Holy Spirit

took the desire away from me altogether."

The Crabbs are also excited about the health message they found in the Bible and have changed their diets as their consciousness about health has changed.

Most importantly, though, Adrian and Heidi believe that God has given them a focus to their lives and a heart to reach out to their old friends. They also believe that it is through the acceptance of church members that they stayed active in the church. "The church members were really supportive and welcomed us wholeheartedly by bringing us food, asking us if there

The information we received in the Prophecy Seminar wasn't new to us. The one thing that kept us coming back was the way that the church members treated us

was anything we needed," said Adrian. "The information we received in the prophecy seminar wasn't new to us. The one thing that kept us coming back was the way that the church members treated us."

Brian and Kristin Potts were active members in the Columbus Lutheran church when they received a card in the mail advertising a prophecy seminar in Sun Prairie. Kristin initially attended the seminar by herself, but her excitement soon led Brian to join her. At those meetings, the Potts believe they heard the truth through the word of God and were convicted to



Brian and Kristin Potts

start attending the Adventist Church. They became baptized members in May 2003. Kristin thanks God for the blessings He has brought to their lives through the church.

"Before I came to the church, I was an extremely depressed, even suicidal woman. I didn't see any hope in my life and felt lonely and rejected by the people around me," Kristin shared. "I thought that I had to be a certain type of person – successful, beautiful – for people to like me. God healed me of my depression and gave me a church family who don't care how I dress or what I have."

While Kristin and Brian love their new church, they have had to get used to some different ideas. Praying out loud, foot washing, even camp meeting were experiences that took them out of their comfort zone.

Despite these adjustments, Kristin and Brian feel welcomed and accepted in their new church family. "The church members said to us, 'We're family, we love you, and we want you here.' We know that the church really cares. I would never go back!"

Laura Larssen, Madison East

Hispanic Adventist Youth Sabbath



The group celebrated Holy Communion with Pastors Gomez and Mendoz officiating

The Wisconsin Federation of Hispanic Adventist Youth (JAHWI) celebrated its annual youth Sabbath on Sabbath, February 21 at Wakonda. Over 200 people attended, a majority of whom were youth. The Sabbath began with the call to be "Fishers of Men," by guest speaker, Dr. David Lopez from Andrews University. One of the many highlights of the day was seeing the youth step-up and accept the challenge of rescuing other youth for Jesus.

They were then given the tools necessary such as: Steps to Christ, and "Fe De Jesus" (Spanish Bible study guides), to empower them in sharing the love of Jesus. Among the youth, 16 visitors accepted Bible studies and received a gift Bible. This year, the theme was *Heme Aqui, Enviame a Mi*, which means "Here I am, Send

Me." This was a giant step towards helping fulfill God's mission for the Spanish youth in Wisconsin.

For other events, go to www.jahwi.org

*Donna Maldonado,
Racine Spanish*



Young people listened attentively to Dr. David Lopez



A large group of ladies gathered in the lodge for a group picture

Fire Prevention Awards to Eau Claire Adventist School Students



Brittaini Daw, 7th grade, received a first place award for her Fire Prevention poster

On January 27 four students from Otter Creek Christian Academy were honored in an award ceremony at the Altoona Fire Hall.

These four students were among a group of 1100 students who participated in a Fire Prevention Poster Contest sponsored by the Altoona Firefighters Association. Sixteen prizes were awarded in all, two per grade for grades one through eight. First prize posters will be sent in to the State Fire Prevention Poster Contest.

Among the winners were: 2nd place, 6th grade Kyle Thompson, 2nd place 7th grade Stephanie Goss, 1st place 7th grade Angelique Kuntz, and 1st place, 8th grade Brittaini Daw. Congratulations to all the students who participated in Fire Protection awareness.

Laura Daw, Eau Claire Church

LAVA LAVA ISLAND

Where Jesus' Love Flows



Hold on to your seats and your hats! Come and enjoy Vacation Bible School Workshop from a man's perspective. Don Laing from the Review and Harold will be at the Conference office on May 2. The adventure begins at 10:00 a.m.—you can enjoy Vacation Bible School to the fullest and begin to feel like a child again.

Call Kitty Crary at 608-241-5235 to reserve your seat.

Wakonda Camp Dates

7/4-11 Junior Camp 8-10 yrs.
7/11-18 . Tween Camp 10-12 yrs.
7/18-25 Teen Camp 13-16 yrs.
7/25-8/1 .. Family Camp-All ages



Over 100 Christian men gathered on the weekend of January 30 for fellowship and spiritual nurture at the Annual Wisconsin Men's Retreat

Wakonda Work Bee

Do you enjoy Wisconsin Camp Meeting? Do you want to see our Youth Camp better equipped? Then plan on attending the Wakonda Work Bee on May 16. Work will begin by 8:00 a.m. (there may be those who start earlier) with lunch and supper provided for all who participate.

If you have special skills or equipment, call Pastor Mike Edge at 608-241-5235 for details on how you can make a difference. All can help: "We see more work being done in one day than our camp staff can accomplish in weeks," reported Mike Edge, Camp Director. "If you have a willing heart and want to work, Wakonda needs you!"

CARS, CARS, CARS

Thanks to all who have made donations this past year to our car renewal program. We had a nice number come in at the end of the year which was greatly needed.

At the time of this writing, you have donated over \$14,000 to the Worthy Student Fund at Wisconsin Academy from vehicle donations. Keep up the good work!

If you have not, but would like to donate a car, truck, boat, or

camper, call Floyd Brock at: 920-623-2055.

May the Lord bless your generosity.

Fireside Lodge

It's hard to believe that just a few short months ago a flat slab was all that promised of our new Fireside Lodge. But then



Fireside Lodge is nearing completion for Camp Meeting, 2004

70+ Maranatha workers arrived, and erected the structure. Throughout the cold winter months, plumbers, electricians, heating installers, Jim Johnson and Floyd Brock have diligently labored and the new lodge is nearing completion.

This first week of March drywall is being finished up and the installers will begin placing tile on kitchen walls and floors next week. The rock is looking great as the fireplace begins to take shape. Already some of the kitchen equipment has arrived. Visible changes are happening very quickly. There is still much to do, and your prayers and support are much needed as camp meeting is just around the corner.

Sunday, June 20, will mark an historic point in Camp Wakonda's history. That afternoon, there will be a celebration service looking back over our 25 year history of Camp Wakonda. Also, we will have a special grand opening of our new Fireside Lodge. You won't want to miss the historic pictures, the stories, and the food.

Mike Edge, Camp Director

**WISCONSIN BUDGET GOAL
Thru December 2003**

CHURCH	MEM.	GOAL FOR 2003	GOAL THRU 12-31-2003	AMT REC THRU 12-31-2003	AMT UNDER GOAL 12-31-2003	% OF GOAL RECEIVED
Fish Creek	13	751.25	751.25	2,226.97	-1,475.72	296%
Sturgeon Bay	23	1,484.88	1,484.88	4,321.14	-2,836.26	291%
Oconto	32	703.97	703.97	1,484.20	-780.23	211%
Beaver Dam	24	1,002.38	1,002.38	2,091.07	-1,088.69	209%
Gillett	27	857.63	857.63	1,353.60	-495.97	158%
Monroe Company	12	611.82	611.82	897.62	-285.80	147%
Wausau	85	5,414.91	5,414.91	7,038.36	-1,623.45	130%
Frederic	59	5,399.58	5,399.58	6,898.91	-1,499.33	128%
Reedsburg	50	1,695.16	1,695.16	2,149.43	-454.27	127%
Moon	14	797.58	797.58	964.81	-167.23	121%
Janesville	86	3,598.38	3,598.38	3,977.36	-378.98	111%
Baraboo	36	2,779.53	2,779.53	3,025.00	-245.47	109%
Clearwater Lake	80	2,342.41	2,342.41	2,528.13	-185.72	108%
Rhineland	102	5,460.71	5,460.71	5,843.35	-382.64	107%
Rice Lake	133	8,293.90	8,293.90	8,814.19	-520.29	106%
Milton	149	5,661.26	5,661.26	5,695.93	-34.67	101%
Delavan	68	4,764.17	4,764.17	4,716.18	47.99	99%
New London	55	2,482.32	2,482.32	2,423.98	58.34	98%
Portage	101	4,638.52	4,638.52	4,470.62	167.90	96%
Evansville	27	1,219.73	1,219.73	1,173.00	46.73	96%
Menomonie	52	1,531.53	1,531.53	1,470.35	61.18	96%
Lakeland	44	2,442.32	2,442.32	2,340.74	101.58	96%
Almond	49	2,844.42	2,844.42	2,497.39	347.03	88%
Wisconsin Acad.	292	18,877.50	18,877.50	16,542.39	2,335.11	88%
Madison	399	24,047.25	24,047.25	21,010.35	3,036.90	87%
Oakland	37	2,218.38	2,218.38	1,936.79	281.59	87%
Tomah	40	1,666.14	1,666.14	1,439.38	226.76	86%
Prairie du Chien	22	908.19	908.19	722.14	186.05	80%
Merrill	24	1,187.22	1,187.22	938.41	248.81	79%
Hylandale	71	2,138.50	2,138.50	1,665.43	473.07	78%
Oxford	69	6,753.93	6,753.93	4,954.76	1,799.17	73%
Sparta	66	489.26	489.26	358.79	130.47	73%
Beloit	67	1,983.57	1,983.57	1,403.59	579.98	71%
Fox Valley	246	15,516.03	15,516.03	10,491.40	5,024.63	68%
Shawano	29	1,129.81	1,129.81	745.22	384.59	66%
Stevens Point	56	3,060.99	3,060.99	1,969.64	1,091.35	64%
Sheboygan	85	8,059.00	8,059.00	4,865.94	3,193.06	60%
Marshfield	122	6,251.33	6,251.33	3,759.50	2,491.83	60%
Bethel	152	5,665.37	5,665.37	3,175.49	2,489.88	56%
Lena	65	5,017.61	5,017.61	2,787.95	2,229.66	56%
Neillsville Company	21	724.24	724.24	395.16	329.08	55%
Madison Community	153	11,634.77	11,634.77	6,145.35	5,489.42	53%
Watertown Sp. Co.	16	854.41	854.41	445.50	408.91	52%
Waukesha	263	13,797.08	13,797.08	7,001.63	6,795.45	51%
Milwaukee Central	249	14,237.87	14,237.87	7,013.43	7,224.44	49%

	MEM.	GOAL FOR 2003	GOAL THRU 12-31-2003	AMT REC THRU 12-31-2003	AMT UNDER GOAL 12-31-2003	% OF GOAL RECEIVED
CHURCH						
Green Bay	488	25,282.75	25,282.75	12,411.70	12,871.05	49%
Durand	61	3,105.68	3,105.68	1,512.75	1,592.93	49%
Lancaster	63	2,922.16	2,922.16	1,416.38	1,505.78	48%
Watertown	41	992.98	992.98	463.25	529.73	47%
Wisconsin Rapids	78	2,838.77	2,838.77	1,307.40	1,531.37	46%
Eau Claire	155	9,233.09	9,233.09	4,173.93	5,059.16	45%
Racine	125	4,744.54	4,744.54	2,003.06	2,741.48	42%
Milwaukee Cent. Sp	131	5,052.35	5,052.35	2,123.52	2,928.83	42%
Richland Center	74	3,436.59	3,436.59	1,410.95	2,025.64	41%
Superior	58	2,832.66	2,832.66	1,094.19	1,738.47	39%
LaCrosse	69	2,931.36	2,931.36	1,104.52	1,826.84	38%
Tomahawk Company	22	1,723.61	1,723.61	578.00	1,145.61	34%
Sheboygan Sp. Co.	49	1,693.72	1,693.72	552.73	1,140.99	33%
Clear Lake	98	7,178.70	7,178.70	2,205.17	4,973.53	31%
Spooner-Trego	12	221.97	221.97	67.37	154.60	30%
Pound	55	1,761.66	1,761.66	524.28	1,237.38	30%
Raymond	120	6,690.74	6,690.74	1,966.88	4,723.86	29%
Milw. N. Sp.	137	3,638.92	3,638.92	1,005.54	2,633.38	28%
Milw. Hayes Sp.	49	1,847.90	1,847.90	484.06	1,363.84	26%
Milwaukee N. West	156	12,970.59	12,970.59	3,321.05	9,649.54	26%
Hayward	32	2,698.20	2,698.20	649.76	2,048.44	24%
Chippewa Falls	33	1,994.33	1,994.33	468.25	1,526.08	23%
Menasha	59	4,358.83	4,358.83	935.65	3,423.18	21%
Ashland	48	1,410.26	1,410.26	241.25	1,169.01	17%
WI Conference	228	19,441.44	19,441.44	3,146.05	16,295.39	16%
Antigo	42	1,794.21	1,794.21	241.25	1,552.96	13%
Racine Spanish	52	1,230.90	1,230.90	128.36	1,102.54	10%
Milw. Maranatha Sp.	30	974.28	974.28	35.33	938.95	4%

Stewardship Opportunity

In these days of terrible passbook and CD interest rates Gift Annuities are increasingly attractive!

One of our Wisconsin members recently took money earning ½ a percent interest and purchased a Gift Annuity from the Wisconsin Conference. This member will get 11.3% for life!

If you are disappointed by the interest rate you're getting and you'd like to increase your income, you can give Elder Richard Habenicht a call at 608-241-5235. He will acquaint you with the program and answer your questions. See what rate of return you can receive while tangibly benefiting the Lord's work.

The LampLetter is the Newsletter of the Wisconsin Conference of Seventh-day Adventists.

Donald Corkum	President
Brian Hamilton	Secty/Treasury
James Fox	Editor
Kitty Cray	Secretary
Laura Larssen	Layout Editor

Your comments and submissions are welcomed:

Wisconsin Conference
of Seventh-day Adventists.
P.O. Box 7310
Madison, WI 53707
Attn: James Fox or
jfox@wi.adventist.org

The Great Advent Movement—People in Transition

We welcome the Carlton family to the Eau Claire and Chippewa Falls Churches. In addition to pastoring, Brian's experience includes working in conference administration, trust service, auditing, and health care finance.



Brian and Karen, Alicia and Emily Carlton

Some of our pastoral districts have been realigned. Pastor Ric Swaningson will become half-time evangelist for Wisconsin while continuing to pastor the Milwaukee Northwest church.

Pastor John Glass has accepted the Watertown Church to be included with the Waukesha Church in his pastoral district.

Pastor Pavel Goia has accepted the Milton Church into his pastorate of the Janesville District.

Pastor Abraham and Joan, Rajish, Sanjay, and Ravi Swamidass are the new pastoral family for the Madison Community and Evansville Churches. Pastor Swamidass will also give leadership to the Family Life Department of the Wisconsin Conference.



Abraham and Joan Swamidass



Lisa Isensee

Lisa Isensee leads out in Church Planting in Wisconsin. Lisa's goal is to establish a Wisconsin Chapter of the SEEDS church planting association. In addition to being a full-time wife and mother to two growing children, she is serving the Monroe Church and community in a voluntary capacity providing pastoral service.

Wisconsin Conference of Seventh-day Adventists

P.O. Box 7310

Madison, WI 53707-7310

Return Service Requested

PRSTD STD
US POSTAGE PAID
NEW LONDON WI 54961
PERMIT NO 9

MAY 19 PAID

MAY 19 PAID