

Camp Meeting

ANNOUNCEMENTS

ABC Sunday Sale - Take advantage of some great buys at 9 am in Pioneer Pavilion. Prices good only during this limited time sale.

Exercise Program for Ladies Monday-Friday. Maria Lopez will be leading strength training exercises in the ball field from 8:00 - 8:45 am. The focus will be on bone and muscle exercises.

Wisconsin Academy Cinnamon Rolls- Stop by the WA cabin this morning after the "Hustle" for cinnamon rolls.

Choir/Orchestra Practice - Don't miss this opportunity to enjoy the camp meeting choir & orchestra. Choir practice will be held in Pioneer Pavilion beginning Sunday from 1-2 pm. Orchestra will meet Thursday & Friday after the evening meeting.

Swimming Bands - Swimming bands are required for primary and junior aged children. Cost is 50 cents. Parent signature required. Paperwork available in the Primary and Junior divisions Sunday. Swimming begins Monday.

ABC \$1 Book: Sunday
10 Cans by Dr. Dale Henry

How to Pick the Best Shelter Dog for You - Seminar Tuesday 3-4 pm in the Andrews Cabin.

Pathfinder Honors Taught Sign up Sunday morning from 2 - 5 pm to take honors classes each afternoon. Cabin open Sabbath and Sunday 2 - 5 pm, Monday - Friday 1:30 - 3:30 pm.

GLOW Tract Bulk Sale \$4.50/100 pk when you buy 20 or more packages. While supplies last. GLOW is one of the best witnessing tools for your dollar!

Red Hat Society - Monday at 11:30 am in Cedar Lodge. Bring finger foods and desserts to supplement a sloppy joe lunch. Silent auction for quilt will help support the Rhinelander school.

Pathfinder History Cabin Do you have a Wisconsin club uniform name crest you can share? It can be used in the Pathfinder cabin. Contact Becky Ziesmer at beckyz1228@gmail.com.

Camp Meeting 2013 Celebrate the 150th anniversary of the Adventist organization in Wisconsin. June 14-22, 2013.

Family Ministry - Father's Day gift, free popcorn and lemonade from 1 - 4 pm. Family Life cabin will be open for marriage and family counseling from 9 am - 12 pm.

Ministry Display Cabin - Stop by and see various ministries.

Fireside Lodge Cafeteria SUNDAY'S MENU

BREAKFAST
biscuits & gravy • breakfast patties • scrambled egg • scrambled tofu • tater tots • shredded hash browns • grits • fruit bar



LUNCH
mac & cheese • sam's chicken • dinner rolls • asparagus • baby carrots • salad bar

SUPPER
Mexican bar • fresh fruit

Revived By His Word TODAY'S READING

Ephesians 1:1-23

Weather Forecast FOR SUNDAY

Daytime	Nighttime
	
Mostly Sunny 0% precip	Partly Cloudy 20% precip
84° HIGH	66° LOW
Subject to change without notice	

Sabbath's Enigma Answers
Enigma 1: Snow
Enigma 2: Isaiah

CAMP LAMP

Sunday, June 17

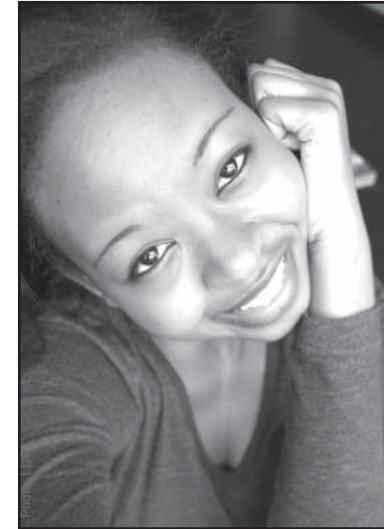
LIVING THE MISSION THROUGH THE VISUAL ARTS

Creating art under the guidance of Christ is what gives my life meaning. It also gives others hope. As an artist, I share my life experiences through images recreated with paint on canvas or the eye of a camera.

The content of my artwork comes from the thoughts that occupy my mind and the relations I have with people. But the power behind its creation is my God-given intuition and connection with Jesus through His Word.

When I create art influenced by self, it always results in powerless art. There are no transformational qualities. But when my art is saturated with the presence of Christ, it transforms and impacts the lives of others. It also makes me extremely happy.

For this reason I am positive that God blesses everyone with gifts with the intention for them to be used to honor and glorify Him and His purposes. Without this vital relationship with Jesus, I cannot create



Aiesha Anglin is a junior art major at Milwaukee Institute of Art and Design.

art that is meaningful to me or transformational for others.

To me, being an artist for Christ means living in complete submission to God's will, then using the tools He has blessed me with for completing the work He has called me to do.

From the moment I rise to the moment I settle to rest, I create. Creating reflections of important moments and unnoticed miracles in this life and in this

world - through my world as I know it. It is a never-ending process that is continually under reconstruction.

At times, during high school, this process consisted of early morning devotions at 4:00 am followed by 3-4 hours of painting before school, but that process has drastically changed now that I'm in college.

Revealing God's hand in the visual arts is a life-style consisting of my personal relationship with Jesus, the way I think, communicate, relate with people, and perceive the world around me every day.

To be a Christian artist can be overwhelming at times, but it also brings me the greatest pleasure I've ever experienced.

Though I love creating art, I don't do it for self gratification alone. I do it because it brings glory to my God. He promised that when I bring glory to Him He will exalt me. Therefore, I will continue creating until He tells me to stop and calls me home.

Aiesha Anglin

MEET OUR SPEAKERS

CHUCK BURKEEN



Morning Speaker - 9:30

Chuck Burkeen is currently the director of the Member Ministry department in the Oregon Conference. He has served for 20 years as pastor of several churches, and served as Associate Ministerial Director in the Oregon Conference.

Chuck wrote the book *A Place for Us Guys* and has written articles for several Adventist publications, including *Renewed and Ready* magazine.

Chuck graduated with a B.A. in Theology from Walla Walla College and a masters in pastoral ministry from Andrews University.

He and his wife, Joyce, have two children. They enjoy backpacking, photography, playing guitars, cycling, white-water rafting, and spoiling their two grandkids.

Juanita Edge



Camp Meeting Flowers

The potted flowers and plants around camp each year are provided by Neil Mishleau of Fox Valley church. He also provides plants at wholesale prices to churches and schools for fundraisers. "Some schools have raised \$600-\$700 selling poinsettias at Christmas or hanging baskets for Mother's Day," said Neil. Thanks Neil! foxvalleygreenhouse.com.

Juanita Edge



Camp Meeting Physician

Dr. Arlene Gayle is a Hematologist-Oncologist in the Marshfield Clinic, in Marshfield, Wisconsin, and is a member of the Marshfield SDA Church.

Juanita Edge

Camp Meeting 2012

BY THE NUMBERS

190 family campers are registered to enjoy a week of fun and inspiration at Wakonda's family camps. Register at www.wakonda.org.

82,000 non-food items are for sale in the ABC store at camp meeting this year.

69 Seventh-day Adventist churches open their doors to communities in Wisconsin each Sabbath.

11 Adventist elementary and secondary schools share Jesus daily across Wisconsin.

BIBLE ENIGMA 1

I'm not sure which was my most famous role:/Being eaten by many or eating one whole/ I once had a coin but it went for a fee/And some miracle math was accomplished with me.

Kevin Wilkinson

BIBLE ENIGMA 2

In one sense, I'm an instrument to calculate dispensing/ In another, I am quite an instrument for cleansing/ Someone was seen taking one of me/And quite ironically, I'm a third of who she was/ Defining her syllabically.

Kevin Wilkinson

Answers in tomorrow's issue. For clues, stop by the Camp Lamp office.



Paddle Boats at Wakonda

Come try out one of the four new paddle boats down at the newly enlarged beach and swimming area this year!

Juanita Edge



Lisa Isensee Church Planting

Studies show that denominations and regions that emphasize and encourage church planting grow in membership. Conversely, those who do not add additional congregations decline in membership. Church planting is one of the most effective methods of evangelism, and can bring spiritual renewal to established congregations! Learn more at the church planting seminars starting this afternoon. This ministry demographics seminar will help future church plants, and existing congregations, understand and meet community needs.

Lisa Isensee

Question of the Day

WHAT MAKES A MAN A GODLY FATHER?

Deidra Olsen

When I am discouraged I call my earthly father. He prays with me and points me to my Heavenly Father. I think that's the purpose of a godly earthly father.

Donna Hubert

A man that isn't trying to be the one who is perfect, but pointing his children to the One who is perfect.

Jackie Goss

A man who remembers he has a family and is not 100% job oriented. God gave men a great work in ministry to the family.

Bob Sachse

Depends on the amount of time a man spends with God.

Dallas Buchholz

In qualities, he would be patient, humble yet not passive, informative, kind. value people, seek wisdom daily, listen, lead by example, & love his wife openly and privately.

Carol Mertins

A godly father seeks his Savior first each day, and lovingly represents Him to his children.

Sandy Magray

Daily connection with his God.



Pitcairn Schooner Donated

Bob Zutz, member of the Delavan church, built a model of the ship Pitcairn and donated it to Camp Wakonda. He built it from cherry wood he cut from his property in Wisconsin. The historic Pitcairn ship was built in 1890 and sent to evangelize the Pacific Islands. The model is displayed on the mantel in Fireside Lodge. Stop by and take a look at it!

Juanita Edge



Author of The Full Plate Diet

Dr. Diana Fleming is passionate about taking boring or confusing nutritional information and making it simple, practical and easy to understand.

Juanita Edge