

LampLetter — Wisconsin

Volume 6, Number 2

May, 2003

More Than a Cafeteria

The new Fireside Lodge will be a beautiful structure. It will give us the opportunity to host groups of up to 275 people on a year-round basis (currently limited to groups of 100 during cold weather events).

The Fireside Lodge will be a meeting room as well as a dining hall. Just move tables and chairs and the dining hall easily converts into a meeting room.

The Fireside Lodge will be well equipped to use multi-media presentations for camp meeting seminars and training events—PA equipment, projection screen, and wireless internet access will increase our ability to serve groups using this facility.

In addition, there is a conference room that can be used for committees, a seminar or a display room.

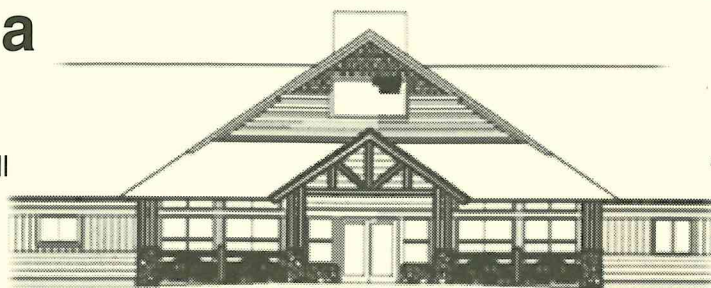
A new commercial grade kitchen will provide food service personnel much needed food preparation equipment and storage.

There are also two offices in the building to serve both summer camp and weekend groups.

Wakonda will better serve our Wisconsin constituency with the Fireside Lodge because:

- ✓ Year-round facility
- ✓ Both heated and air-conditioned
- ✓ Restrooms in the building
- ✓ Can serve groups up to 275 for multiple uses

Mike Edge



Building To Serve

Wakonda Fireside Lodge

Elder Don Corkum, president of the Wisconsin Conference, answered questions from LampLetter about the new building at our campground.

LampLetter: Why are we building this new structure at Wakonda?

Corkum: We are encouraged with the developing usage of our campground facilities. Camp Wakonda serves at least three purposes in Wisconsin:

1. Wakonda is the site for our annual camp meeting
2. Wakonda is the site for our youth camp programs every summer
3. Wakonda is the site for year round use by churches, church groups (Pathfinders, Men's Conference, etc.) and other organizations

We host variable sized groups—with larger groups, preparation of food has become a challenge. We have used household-size cooking facilities to prepare food for groups of 100 or more. Food has to be stored at various places on the campground, brought into the kitchen area for preparation and then sent out for cooking in different buildings. The lack of a kitchen-cafeteria that can be used all year long makes it nearly impossible to sustain this manner of operation.

The Campground Long Range Planning committee has developed a master plan for developing our facilities and they consider this their #1 project. We have voted to call the new structure the **Fireside Lodge**.

LampLetter: What are the commitments involved in building the new Fireside Lodge?

Corkum: In order for our constituency to accomplish such a project, it will take the full support of the membership. We were encouraged by the strong support for the **"Together We Can"** project for Wisconsin Academy. We will need a similar response for this project.

Continued on page 2

Questions & Answers

"Building to Serve" is the project name for building the new kitchen-cafeteria and meeting center for Camp Wakonda.

This project was voted at the Conference Constituency session on October 22, 2003.

What's Inside

Presidential View	p.2
Clear Lake Christian Radio	p.3
Green Bay C.H.I.P.	p.3
Camp Meeting News	p.4
Church Planting Corner	p.5
Wisconsin Budget Report ...	p.6-7
ABC Opportunities	p.8

The Presidential View

Jesus' Priority



Jesus amazed people with His attention to the "unimportant." Why would the King of the universe waste years working in a

carpenter's shop? Why would His Coming be announced almost exclusively to a lowly group of shepherds? Why would He spend so much of His time with the outcasts of society? Why would He live the simplest of lifestyles?

Jesus wants us to understand that often what the world labels "unimportant" bears His label of "High Priority." Also, the world often takes notice when something is done out of its norm. When Christians are following Jesus, they confront the world with a different set of priorities.

How can we determine what is High priority to God? Naturally we find His priorities in inspired writings. But, we must also keep current with God in our daily communication with Him. He makes His will known to us on a daily basis.

A few examples of what many seem to think of as unimportant things are high priorities with God.

Last Sabbath my wife and I with several other family members visited a church in another state. When we entered the building we were greeted by the receptionist. She was warm and friendly and made us feel very welcome in the church. As we conversed with her, we found out she was a relatively new Adventist—but she found this ministry in the church. She was doing it well.

We were also greatly blessed by what many would label as the important ministries of the church—the Sabbath School

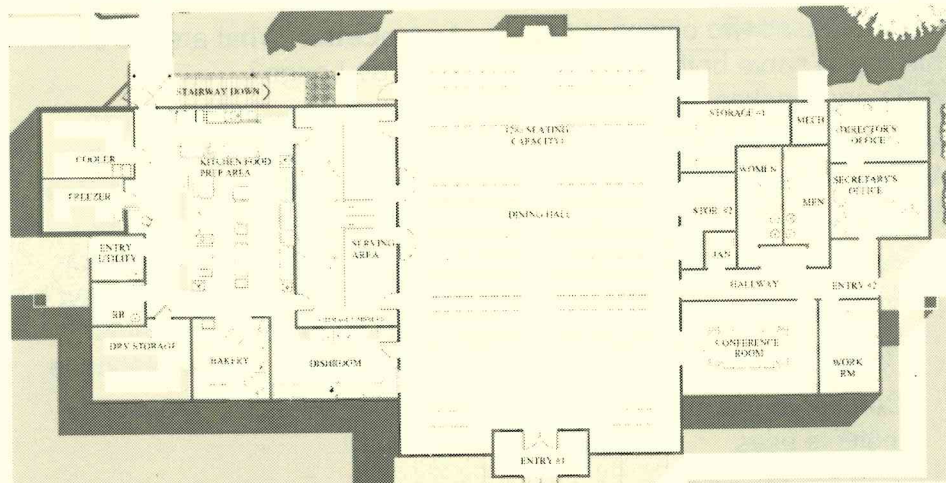
lesson and the sermon. However, in discussing it later, we all agreed that our first impressions which were so positive made our whole day's experience more rewarding.

We could cite many illustrations of what may seem lesser profile works of ministry which are of high priority to God:

- ◆ Giving attention to children, youth and elderly
- ◆ Noticing those not included in fellowship times—not of any inner circle
- ◆ Ministering to the oppressed in our society
- ◆ Helping clean up after a church function
- ◆ Taking advantage of an opportunity to encourage a young person to go to a Christian School
- ◆ Sensing a Christian responsibility to help a person going through difficulty

When everyone in a church is following Christ's priority list, the same dynamic results will happen as when Jesus was ministering here. People were amazed at how different He was than the people around Him. He was following Heaven's principles on earth.

Don Corkum



Architect's Drawings of the Floor Plan of Fireside Lodge

Continued from page 1

The total project cost will be about \$700,000. Trust funds have come in reducing the amount to be raised to about \$500,000. We will be launching the fund raising phase of this project at Camp Meeting 2003. Our goal is to raise all these funds by Camp Meeting 2005.

The projected cost includes considerable volunteer labor. Maranatha Volunteers will arrive in October of 2003 and will assist in the construction of the shell before the weather turns harsh.

LampLetter: When do you anticipate the new building being finished and ready for use?

Corkum: The cafeteria portion of the building needs to be available prior to camp meeting, 2004. If it is necessary, we will phase the project and finish it by Camp Meeting, 2005. If funding permits, we can finish the whole project by Camp Meeting 2004.

Our commitment is the same as during the Cafeteria project for Wisconsin Academy - There will be no external borrowing of funds to finish the project. We will therefore be proceeding as funds become available.

Don Corkum as told to James Fox

Clear Lake Church Breaks Ground for New Radio Station



Elder James Fox, Rey Valentin, Pastor Vassili Khrapov, Dave Jurisch, Norm Britain, Myron Johnson, Tim Stuivenga, Sue Scott, Wesley Nelson, Sheldon Johnson and Harold Garrett took part in the ground breaking.

On Sunday morning, May 18 at 10:00 a.m., members of the Clear Lake Church gathered on the southeast corner of Tim Stuivenga's field to break ground for Christian Radio, WPGR FMLP.

The Church had applied for its license to broadcast back in the autumn of 2000. They were pleased when their license application was granted on July 28, 2001, and they had 24 months to get their station on the air.

Then the trouble began! A certain few neighbors opposed the station by testifying against a zoning motion to allow the 100 foot radio tower. "Our tower is in an extremely unpopulated area," said Norm Britain, Elder of the Church and member of the radio committee. "We were surprised when a couple of folk raised every possible means of delaying our on-air mandate. When the zoning application passed, we felt that God had signaled us that this was His station and we should go forward in faith," reported Britain.

The Clear Lake Church hopes to impact the area with Christian Radio:

1. To provide fine Christian music and programming for all Christian faiths in the Clear Lake area
2. To minister to members of the Adventist Church family with programming to bless them in their faith
3. To reach out to those who do not yet know Jesus or the Adventist message and to bless them with a new perspective of God's love

In the early days of 2001, eight Adventist Churches were awarded licenses for low power FM radio stations in a one-time opportunity. Pray that all eight might clear their hurdles and get on the air to the glory of God.

James Fox

CHIP Debut a Huge Success

Green Bay's first ever Coronary Health Improvement Project (CHIP) was a huge success. Forty-five participants met in the church's community service building and learned valuable truths about diet and lifestyle.

The group experienced very positive changes in their health as averaged below:

Cholesterol: -30 points
(from 204 to 174)

Triglycerides: -40 points
(from 186 to 146)

Glucose: -8 points
(from 89 to 81)

Weight: -7 points
(from 203 to 196)

Family and friends joined the participants as 105 people attended the graduation banquet Wednesday evening, March 12. Very inspiring testimonials were shared. Guest speakers, Dr. Eric and Pam Shadle of Rockford, IL, spoke words of wisdom and encouragement. They highlighted the importance of keeping an open mind through which the Lord can reveal wisdom to us.

On Tuesday, April 1, the Green Bay group got a real treat as CHIP founder, Dr. Hans Diehl, addressed the group at The Bellin Health Center. It was a great opportunity to share gratitude with Dr. Diehl for his dedication in helping people live a healthier and more functional life through the CHIP program. Dr. Diehl reciprocated those feelings by congratulating the Alumni group for their motivation and determination to make the CHIP program a way of life. He encouraged the group to persevere, and to lean on God and each other for support.

The program has spread to four continents and has graduated over 40,000 participants worldwide.

Delmar Austin, Green Bay

Camp Meeting 2003 News for the Pews

Camp Meeting Choir. Two choirs are planned for camp meeting this year. Ed Pelto, director of choral music at Wisconsin Academy, will direct the choir for the first Sabbath of camp meeting. All singers are invited to join for practice following the service in the adult tent on Friday evening, June 13.

Phyllis Corkum will direct the choir for the June 14 Sabbath service. Practices will be held the first weekend on Saturday and Sunday evenings following the service in the adult tent, as well as weekdays from 1:15 to 2:10 p.m.

We look forward to having all singers, trained and those not trained, join the camp meeting choirs and help to provide for inspiring worship during each of the Sabbath morning services.

Camp Meeting Band. We will have a band at camp meeting again this year. Elaine Corson will coordinate the group by providing music. If you play an instrument, please join and provide accompaniment for the Sabbath School song services both Sabbaths.

Phyllis Corkum, Music Chairperson

Wanted!

Helpers needed in Cradle & Kindergarten at Camp Meeting. Contact Kitty Crary at 608-241-5235, ext. 102 or kcrary@wi.adventist.org

Adventist Book Center Artist/Author/Speaker Signings

Danny Shelton Sunday
 June 15 1:15-1:45 p.m.
 Michael Harris Concert . Monday,
 June 16 1:15-1:45 p.m.
 Samuel Telemaque Tuesday
 June 17 1:15-1:45 p.m.
 Chris Rucker Wednesday

June 18 1:00-1:30 p.m.
 Dr. Angel Rodriguez Thursday
 June 19 1:15-1:45 p.m.
 Steve Martin Concert Friday
 June 20 3:30-4:00 p.m.
 Dr. William Johnsson... Sat. Night
 June 21 9:00-9:30 p.m.

All will be in the Adventist Book Center at Wisconsin Camp Meeting. (Due to unforeseeable circumstances, dates and times may change. Please check with the ABC for updates)

Space is Available at Camp Meeting 2003

The Locating Department reports that because of cancellations, there are now a limited number of accommodations available for Camp Meeting 2003. You may call Jean Schwark at 608-241-5235 up until June 6 to make your reservation. On June 9 or after, please call 608-296-2126.

Is Food on Your Mind?

Camp Meeting food, that is . . . During Camp meeting, a cafeteria is available from which you may

purchase *a la carte* meals (your charge will vary depending upon what you choose). On Sabbath, however, we offer meals on a flat-rate basis and we ask you to buy your tickets ahead of time. Tickets are on sale at the campground up until 7:30 p.m. on each Friday night. You may also call Jean Schwark at 608-241-5235 and pre-purchase your meal tickets for pick-up during camp meeting (what a great idea!!!).

Breakfast

Kids under 6 \$3.50
 Adults \$4.50
 Seniors \$4.00

Lunch

Kids under 6 \$4.00
 Adults \$5.00
 Seniors \$4.50

Supper

Kids under 6 \$3.50
 Adults \$4.50
 Seniors \$4.00

Mission to Mexico



On March 18, 2003, 32 participants from Wisconsin boarded a green school bus and headed for Ciudad, Victoria, Mexico. Over the next ten days, they held four evangelistic meetings, built a school playground, helped build a new Adventist Church and assisted local Adventists with Bibles, building materials, school equipment and money. The Fox Valley, Green Bay, & Sheboygan Churches gave leadership to the project.

The Great Commission Promise

Church Planting Corner

Nearly 2000 years ago an amazing thing happened: Jesus Christ walked to Calvary for *my* sins. The Savior died, nailed to a piece of wood, because He was determined to save *you*. That is amazing enough!! But an even more amazing thing happened two days later. The Son of God folded his grave clothes, and came walking out of that death-cave. In fact, it was so amazing, so seemingly unbelievable, that some of Jesus' followers shook their heads in disbelief.

"Then the eleven disciples went to Galilee, to the mountain where Jesus had told them to go. When they saw him, they worshipped him; but some doubted. Then Jesus came to them and said, 'All authority in heaven and on earth has been given to me. Therefore go and make disciples of all nations, baptizing them in the name of the Father and of the Son and of the Holy Spirit, and teaching them to obey everything I have commanded you. And surely I am with you always, to the very end of the age.'"

Was this commission just for those eleven disciples? Or is it for you and me, right now? Is it possible that we are still shaking our heads in disbelief? No, maybe not about the resurrection. But about this to-the-end-of-time commission? There are a lot of people in Wisconsin, whole counties, even, that haven't a clue what the three angels' messages are; there are countless people world-wide who haven't even heard of the gospel? These verses earned their nickname: the GREAT commission. But if we stop there we'll be in trouble.

It's a big job but it's a bigger promise. We're marching under the banner of the One who said, "All authority—all power—in heaven

and on earth has been given to me." We are covered by the One who promised He would always be there! We're saved by the Commander of the command. And since He has commanded—He has pledged to provide.

Have you accepted the Great Commission? Perhaps more importantly, do you believe the Commissioner Himself? Not just by mental assent, but in your heart and actions? *Are you experiencing* Matthew 28:16-20? If not, ask God. If you're doubting, put the doubts before Him. He's big enough to

handle them. He's ready to give you a heart-full of contagious belief. It will be truly amazing what God will do. We shouldn't be too surprised—Jesus died and is alive for you!

Assignment: Clip out the Bible text above, or write it down on a 3X5 card and carry it with you for the next month. Keep asking God what He wants you to learn from these verses. Ask Him where He wants *you* to GO. Remember to thank Him for His incredible promises and presence.

Lisa Isensee, Monroe



Aileen King, Phyllis Corkum, Maria Lopez and Areli Rivera addressed 95 ladies at the Hispanic Women's retreat in Brookfield, WI, on May 3.



Pastor Vassili Khrapov recently baptized Dennis and Cody Maloney and Kyle Jordan in the Clear Lake Church.

WISCONSIN BUDGET GOAL Thru December, 2002

MEM.	GOAL THRU FOR 2003	GOAL THRU 4-30-2003	AMT REC GOAL 4-30-2003	AMT UNDER OF GOAL 4-30-2003	% RECEIVED
CHURCH					
Almond	49	2,844.42	948.14	928.51	19.63 98%
Antigo	42	1,794.21	598.07	241.25	356.82 40%
Ashland	48	1,410.26	470.09	241.25	228.84 51%
Baraboo	36	2,779.53	926.51	1,226.03	-299.52 132%
Beaver Dam	24	1,002.38	334.13	685.02	-350.89 205%
Beloit	67	1,983.57	661.19	495.57	165.62 75%
Bethel	152	5,665.37	1,888.46	1,225.18	663.28 65%
Chippewa Falls	33	1,994.33	664.78	195.00	469.78 29%
Clear Lake	98	7,178.70	2,392.90	701.75	1,691.15 29%
Clearwater Lake	80	2,342.41	780.80	949.75	-168.95 122%
Delavan	68	4,764.17	1,588.06	1,168.72	419.34 74%
Durand	61	3,105.68	1,035.23	380.20	655.03 37%
Eau Claire	155	9,233.09	3,077.70	1,353.54	1,724.16 44%
Evansville	27	1,219.73	406.58	311.00	95.58 76%
Fish Creek	13	751.25	250.42	561.69	-311.27 224%
Fox Valley	246	15,516.03	5,172.01	3,413.31	1,758.70 66%
Frederic	59	5,399.58	1,799.86	2,184.94	-385.08 121%
Gillett	27	857.63	285.88	459.60	-173.72 161%
Green Bay	488	25,282.75	8,427.58	4,276.13	4,151.45 51%
Hayward	32	2,698.20	899.40	210.60	688.80 23%
Hylandale	71	2,138.50	712.83	281.18	431.65 39%
Janesville	86	3,598.38	1,199.46	1,655.85	-456.39 138%
Kenosha	59	4,358.83	1,452.94	435.74	1,017.20 30%
LaCrosse	69	2,931.36	977.12	449.41	527.71 46%
Lakeland	44	2,442.32	814.11	829.53	-15.42 102%
Lancaster	63	2,922.16	974.05	419.43	554.62 43%
Lena	65	5,017.61	1,672.54	802.10	870.44 48%
Madison Community	153	11,634.77	3,878.26	2,348.19	1,530.07 61%
Madison	399	24,047.25	8,015.75	6,528.34	1,487.41 81%
Marshfield	122	6,251.33	2,083.78	1,408.28	675.50 68%
Menomonie	52	1,531.53	510.51	558.67	-48.16 109%
Merrill	24	1,187.22	395.74	274.51	121.23 69%
Milton	149	5,661.26	1,887.09	2,120.46	-233.37 112%
Milwaukee Central	249	14,237.87	4,745.96	2,419.59	2,326.37 51%
Milwaukee N. Spanish	137	3,638.92	1,212.97	399.12	813.85 33%
Milwaukee N. West	156	12,970.59	4,323.53	1,162.15	3,161.38 27%
Milw. Maranatha Span.	30	974.28	324.76	35.33	289.43 11%
Milw. Hayes Span	49	1,847.90	615.97	98.33	517.64 16%
Milwaukee C. Spanish	131	5,052.35	1,684.12	736.75	947.37 44%
Moon	14	797.58	265.86	329.53	-63.67 124%
Monroe Company	12	611.82	203.94	125.63	78.31 62%
Neillsville Company	21	724.24	241.41	172.93	68.48 72%
New London	55	2,482.32	827.44	850.37	-22.93 103%
Oakland	37	2,218.38	739.46	437.12	302.34 59%
Oconto	32	703.97	234.66	536.50	-301.84 229%

CHURCH	MEM.	GOAL THRU FOR 2003	GOAL THRU 4-30-2003	AMT REC GOAL 4-30-2003	AMT UNDER GOAL 4-30-2003	% RECEIVED
Oxford	69	6,753.93	2,251.31	1,326.00	925.31	59%
Portage	101	4,638.52	1,546.17	1,603.12	-56.95	104%
Pound	55	1,761.66	587.22	175.07	412.15	30%
Prairie du Chien	22	908.19	302.73	254.31	48.42	84%
Racine	125	4,744.54	1,581.51	581.00	1,000.51	37%
Racine Spanish	52	1,230.90	410.30	49.17	361.13	12%
Raymond	120	6,690.74	2,230.25	761.79	1,468.46	34%
Reedsburg	50	1,695.16	565.05	651.38	-86.33	115%
Rhineland	102	5,460.71	1,820.24	1,921.07	-100.83	106%
Rice Lake	133	8,293.90	2,764.63	2,689.43	75.20	97%
Richland Center	74	3,436.59	1,145.53	654.38	491.15	57%
Shawano	29	1,129.81	376.60	180.37	196.23	48%
Sheboygan	85	8,059.00	2,686.33	1,111.76	1,574.57	41%
Sheboygan Span. Co.	49	1,693.72	564.57	145.09	419.48	26%
Sparta	66	489.26	163.09	142.00	21.09	87%
Spooner-Trego	12	221.97	73.99	40.47	33.52	55%
Stevens Point	56	3,060.99	1,020.33	728.89	291.44	71%
Sturgeon Bay	23	1,484.88	494.96	1,345.99	-851.03	272%
Superior	58	2,832.66	944.22	285.29	658.93	30%
Tomah	40	1,666.14	555.38	662.53	-107.15	119%
Tomahawk Company	22	1,723.61	574.54	166.00	408.54	29%
Watertown	41	992.98	330.99	179.00	151.99	54%
Watertown Hisp. Co.	16	854.41	284.80	265.50	19.30	93%
Waukesha	263	13,797.08	4,599.03	2,144.91	2,454.12	47%
Wausau	85	5,414.91	1,804.97	2,286.52	-481.55	127%
Wisconsin Acad.	292	18,877.50	6,292.50	4,326.40	1,966.10	69%
Wisconsin Conference	228	19,441.44	6,480.48	691.60	5,788.88	11%
Wisconsin Rapids	78	2,838.77	946.26	585.55	360.71	62%
TOTAL	6430	348,000.00	116,000.00	72,578.67	43,421.33	63%

Interest Rates Continue in the Cellar

Interest rates haven't been this low in years. That makes it hard for those depending on income from CD's.

The government is reluctant to raise rates as that could negatively affect our fragile economy. We may see these low rates for a while.

If you would like to advance the Lord's work, a Charitable Gift Annuity may be an answer.

For example, Mrs. B has a \$10,000 CD coming due. The best her banker will give her is 2.1% or \$210 income for the coming year.

She would like to do something for the Lord's work but would still like to be able to use the income. If she

used the \$10,000 to purchase a gift annuity from the Wisconsin Conference, she could be guaranteed 9.4% income or \$940 yearly for life and have the joy of knowing the balance in the annuity would further God's work. This example assumes Mrs. B is 84 years old.

If you would like to know more, call Elder Habenicht at 608-241-5235 and find out the rate you could qualify for.

Oh, As a bonus, Mrs. B would receive a current charitable deduction of \$4795 which she could use to reduce her taxable income.

Richard Habenicht, Trust Services

The LampLetter is the Newsletter of the Wisconsin Conference of Seventh-day Adventists.

Donald Corkum President
 Brian Hamilton Secty/Treasury
 James Fox Editor
 Kitty Crary Secretary

Your comments and submissions are welcomed:

Wisconsin Conference
 of Seventh-day Adventists.
 P.O. Box 7310
 Madison, WI 53707
 Attn:James Fox
 or
jfox@wi.adventist.org



Adventist Book Center Campmeeting News



Auditorium Sale - Main Tent Sunday 9:00am!

34 New items - lowest prices of the year! Don't miss this annual event with special drawings and low prices. This is the **ONLY** time to get these special prices.

Camp Meeting Sale Days:
Monday - Bible Day
Tuesday - Kid's Day
Wednesday - EG White Sale
Thursday - Music/Video Day
Friday - Cookbooks/Health Day

See schedule at the ABC to meet our speakers/musicians and have them autograph their products!

Wednesday: Sidewalk/Closeout sale - bargain prices

Be The First

Be the first to try 3 new Worthington foods:

BBQ Fri-Chik - Vegetarian Chik in a zesty barbeque sauce. It is a completely meatless, precooked, vegetable protein product. 15oz can, or 12/case

Stroganoff - Savory brown gravy with mushrooms and sour cream with chunks of veggie beef. 20oz can or 12/case.

Veggie Sloppy Joe - Veggie burger in a tangy tomato sauce. Contains only 2 grams of fat per serving. 20oz can or 12/case.

Stop by the Snack Bar every day for a delicious veggie burger, hot dog, veggie chicken sandwich or corn dog, with nacho's or fries! Frozen Yogurt also available!

Visit us on the web at: www.adventistbookcenter.com
and Vegefood.com

For information, call toll free 1-888-266-5748

Camp Store Hours

Friday June 13	12 p.m. to 6 p.m.
Saturday Night June 14	9 p.m. to 10 p.m.
Sunday June 15 - Auditorium Sale	9 a.m. to 11 a.m.
Sunday - Main Store	12 p.m. to 6 p.m. & 9-10 p.m.
Mon. - Thurs June 16-19	9 a.m. to 6 p.m. & 9-10 p.m.
Friday June 20	9 a.m. to 6 p.m.
Saturday Night June 21	9 p.m. to 10 p.m.
Sunday June 22	7 a.m. to 9 a.m.

The ABC in Sun Prairie is Closed June 4 - 25
ABC Camp Meeting Phone 608-296-2314

Wisconsin Conference of Seventh-day Adventists
P.O. Box 7310
Madison, WI 53707-7310

Return Service Requested

Non-Profit Organization
U.S. Postage Paid
Madison, WI 53707
Permit No. 1107